

GLASS AND PORCELAIN





CONTENT

1. GLASS AND PORCELAIN IN THE CZECH REPUBLIC	8
2. TRADITION	10
3. INNOVATION	13
4. GLASS IN ARCHITECTURE	18
5. GLASS JEWELLERY	29
6. GLASS CHRISTMAS ORNAMENTS	33
7. GLASSWARE	36
8. DECOR AND DESIGN	41
9. HOTEL AND CONTAINER GLASS	47
10. PORCELAIN	49
11. CONTACTS	54

Czech Trade Promotion Agency is proud to present the Czech glass and porcelain companies in the new sector guide.

If you are looking for a supplier in the Czech Republic, Czech Trade Promotion Agency will be delighted to assist you in order to find new manufacturing/ service partners, professional organisations and interest groups.



CzechTrade is a government trade promotion agency of the Czech Republic focusing on developing international trade and cooperation between Czech and foreign businesses. CzechTrade works with Czech companies to facilitate their success on international markets.

The goal of this brochure is to inform interested foreign partners about the field of glass and porcelain production in the Czech Republic. Take the companies listed in this brochure as a sample listing, which will help you to formulate a better picture of the specific field. If you are interested in more information on Czech companies, please contact: **supplier@czechtrade.cz**

CzechTrade

YOUR BUSINESS PARTNER IN THE CZECH REPUBLIC

Foreign companies contact CzechTrade when looking for new reliable partners in the Czech Republic. CzechTrade's foreign office network together with its sourcing team will identify potential suppliers based on your requirements:

- Initial consultation by phone /email / in person
- Provision of a basic overview of a special sector
- Compilation of a contact list of companies interested in cooperation
- Eventual facilitation of meetings with Czech companies, so-called Sourcing Days

Other services:

- Access to verified Czech suppliers
- Assistance with language support
- Presentation of Czech companies at foreign trade shows
- Preparation of business missions to the Czech Republic
- Providing the online database Czech Exporters Directory <http://exporters.czechtrade.cz>



Information and contacts
for individual foreign offices
can be found at
www.czechtradeoffices.com

Head Office

Czech Trade Promotion Agency
Štěpánská 567/15
120 00 Prague 2
Czech Republic
Phone: +420 224 907 820
E-mail: info@czechtrade.cz

DID YOU KNOW?

CzechTrade has an extensive network of foreign offices in almost 60 countries on 5 continents. Within their scope of activities, the foreign office network covers Europe from Scandinavia to the Balkans, Eastern Europe and the CIS, Africa from Sub-Saharan Africa to South Africa, major Asian regions, the American continents from Canada to Latin America, and Australia.

THE CZECH GLASS AND JEWELLERY CENTRE OF CULTURAL EXCELLENCE

The Czech Glass and Jewellery Centre of Cultural Excellence was established by the Czech Ministry of Culture in collaboration with the Museum of Glass and Jewellery in Jablonec nad Nisou. It was created as a means to support cultural and creative industries in line with the Czech Republic's national cultural policies for 2015–2020. The groundwork for the project and management of the centre has been undertaken by the Museum of Glass and Jewellery in Jablonec nad Nisou. The museum is the sole state institution at present that specialises in the documentation, study and presentation of glass and jewellery manufacture in the Czech Republic.

The centre maintains the ambition to become a significant source of information to assist manufacturers and designers in the fields of glass and jewellery. It aims to help create a much wider public for their products and activities, together with increasing awareness of this Czech cultural phenomenon, both nationally and internationally. The purpose of the centre is to exploit the cultural heritage and cultural activities to develop the economy, improve competitiveness, and enhance the mobility of experts, workers, traders and end-users, support tourism and increase awareness of Czech glass today.

The main mission of the centre is the management of www.czechglasscompetence.cz, (www.czechglasscompetence.com), an interactive Internet database for the benefit and promotion of Czech glass and jewellery. This Internet portal is available in two languages, English and Czech. Those interested in current production and design will be able to access a nationwide register of active manufacturers and designers. At present the site boasts up to 300 companies and 200 designers. Producers may actively participate in the appearance of their presentations by forwarding their own texts, photographs and other media.

The Czech Glass and Jewellery Centre of Cultural Excellence
E-mail: info@czechglasscompetence.cz
www.czechglasscompetence.cz

Museum of Glass and Jewellery in Jablonec nad Nisou
Phone: +420 778 527 126
E-mail: czechglasscompetence@msb-jablonec.cz



Those interested in studying and learning about glass and jewellery can access information related to secondary and post-secondary schools, available courses and workshops at several levels of proficiency. The centre offers researchers and those interested in the history and topics surrounding glass and jewellery access to databases of professional literature, historical photographs and other media, including details of former glass-working operations and localities.

The website also focuses on presenting the rich history of both sectors of the industry. Alongside a general introduction to the history, there are details of over thirty museums and other collections dealing with Czech glass and jewellery. There is also an extensive collection of photographs of works of art and other pieces from specific periods in history up to the present day.

The Centre of Cultural Excellence offers research opportunities on given topics and can arrange meetings with producers, dealers and other collections.



1 GLASS AND PORCELAIN IN THE CZECH REPUBLIC



The exceptional history of Czech glass rests upon 700 years of manufacturing excellence, while the nation's porcelain has been around for 230 years. The exclusive design ideas, craftsmanship and unique techniques make the products one of the most successful Czech export items.

The competitive advantages of the Czech Republic are: TRADITION, UNIQUE TECHNIQUES and CREATIVE DESIGN.

The manufacture of glass, ceramics and porcelain has a long tradition in the Czech Republic, and Czech products are well recognised internationally. The glass industry, famous for its uniqueness and high-quality craftsmanship, makes use of domestic raw materials such as sand, kaolin, feldspar and silica. The country's glass industry covers the production of flat glass, container glass, glass fibres, glassware and lighting glass. As for porcelain and ceramic production, its subcategories include domestic, technical and medical ceramics. The ceramic industry is concentrated mostly in the western part of the Czech Republic where kaolin deposits are found.

GLASS AND PORCELAIN IN NUMBERS

129
companies

About 129 companies (with more than 50 employees) and more than 20,000 employees work in the glass and porcelain industry.

45.6
billion CZK

Revenues from sales of own products exceeded almost 45.6 billion CZK, 40% of which is flat glass.

88
%

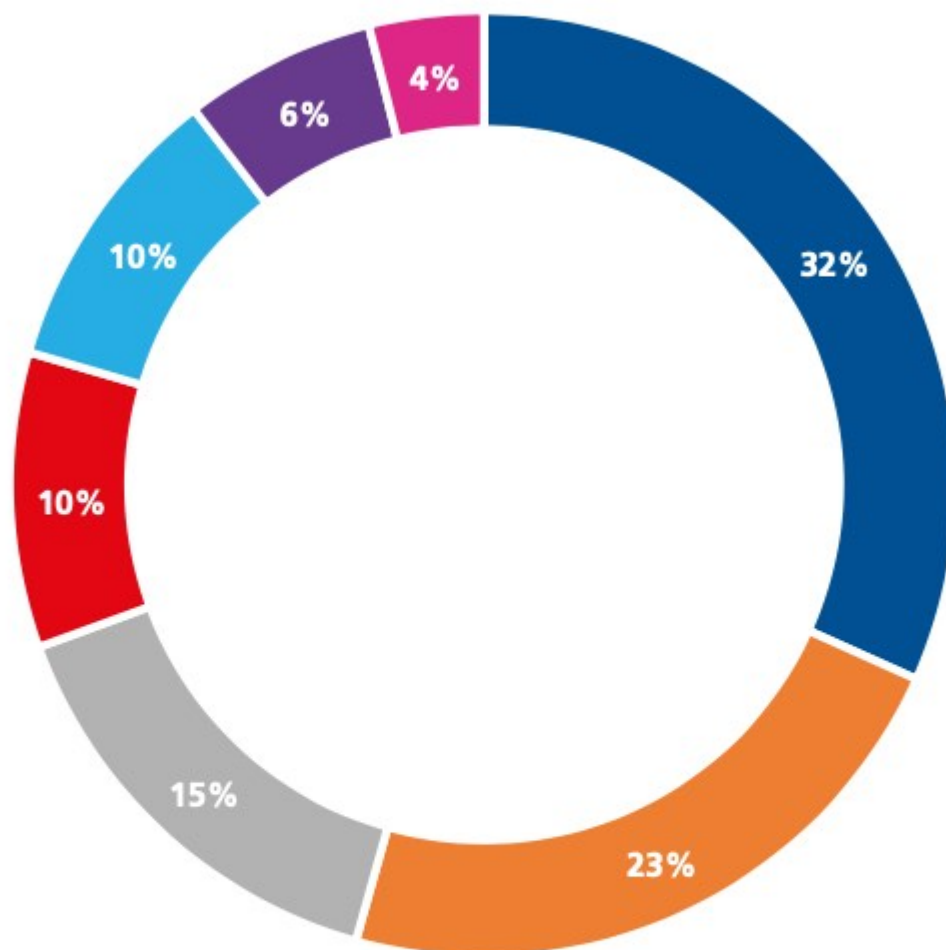
Exports are dominated by glass – it accounts for 90% of exports. TOP glass exports: 32% flat glass, 22% glass fibre and 17% domestic glass. 78,4% of glass product exports go to the EU. The main export destinations of glass and glass goods: Germany, Poland and Italy.

25
million

AGC Automotive Czech produces and sells about 25 million units of car glass per year, and it is thus one of the largest and most comprehensive similar manufacturers in Europe.

Source: Annual Report of the Glass and Ceramics Industry for 2020,
Average exchange rates (2020): 1EUR: 26,444; 1 USD: 23,196

EXPORTS OF GLASS AND PORCELAIN PRODUCTS FROM THE CZECH REPUBLIC IN 2020



- Flat glass – 14.505 bn CZK
- Glass fibre – 10.348 bn CZK
- Domestic glass – 6.891 bn CZK
- Other glass – 4.612 bn CZK

- Container glass – 4.577 bn CZK
- Technical and medical ceramics – 2.998 bn CZK
- Domestic porcelain and ceramics – 1.794 bn CZK

Figure 1: Exports of Glass and Porcelain in 2019
Source: Annual Report of the Glass and Ceramics industry for 2020

2 TRADITION

Czech glassworks and glass have been consolidating their global prestige for over 700 years. This tradition, dating back to the 13th century, allows Czech glassworks to offer unrivalled quality and the exceptional processing of materials.

Czech glass art earned its place at the royal court in the 16th century, and since then it has become a part of collections worldwide. In the 18th century, Bohemian crystal conquered almost the whole world. In quality, it even overshadowed Venetian glass, hitherto the most highly sought-after glassware. In the 19th century, Czech production became synonymous with cut crystal and coloured objects decorated with paintings and engravings.

Czech production also achieved a high technological level, as shown by several inventions and patents (e.g. the first chemically resistant glass in the world).

In the 19th century, Bohemian glassmakers started to specialise in crystal chandelier production. Today, these have become an important export commodity with constantly growing demand around the world and Czech glass decorates the state rooms of government houses and royal homes. Glass designs by renowned Czech designer Bořek Šípek are found in the collections of Bob Dylan and Mick Jagger; they are a crown jewel in Beijing, London, Paris and New York; they are owned



by Bill Clinton, his Royal Highness King Harald V of Norway, Japan's Princess Sayako and her Highness Princess Caroline of Monaco. Even Pope Francis has received a beer glass as part of a gift from the Czech Republic. Czech glass lighting installations by companies Lasvit and Preciosa Lighting can be found in the most luxurious hotels, palaces, airports, museums and luxury yachts all over the world.

DID YOU KNOW?

The first mosaic made in Bohemia is from 1370. It was made with the help of Venetian specialists. The tradition of mosaic manufacture has continued to flourish: e.g. in 1958 a mosaic by the famous Czech architect Josef Kaplický won a gold medal at EXPO'58 in Brussels. Czech mosaics can be found throughout the world, including Beijing, Rio de Janeiro and Moscow. One current producer engaged in the technology of stained glass and mosaics is the company SVĚT SKLA, which is carrying out work in the USA, Beijing and Abu Dhabi.

GLASS MANUFACTURING WITH OVER 160 YEARS OF TRADITION

The founder of the Moser glassworks, Ludwig Moser, was driven by his desire to push the boundaries and beauty of lead-free crystal glass to the proverbial edge of possibility. To this end, he enriched clear crystal with exclusive decorations as well as unique colours and united the top masters in the glass industry

so they could together create pieces that were the first of their kind. More than 160 years have gone by since the company's founding, yet the Moser brand remains true to its legacy. Every glass or work of art passes through forty pairs of hands before ever leaving the glassworks' door. This brand's drinkware collections and decorative pieces are sent all over the world. They can be found in royal courts, next to prominent politicians,

and other people of importance. Owners of Moser crystal include the likes of England's Queen Elizabeth II, Spain's King Philip VI, as well as former Pope Benedict XVI. Further proof of the extraordinary handcraft and artistic quality of its creations is the Moser glassworks' membership of the renowned Comité Colbert, which strives to unite distinguished luxurious brands.

MOSER, www.moser.com



100 CRAFTS UNDER ONE ROOF

All of Preciosa Lighting's work is done under one roof, where one hundred professions come together to craft the perfect light. From the first sketch to the mock-up to production to finishing and assembling, Preciosa's professional

team ensures the highest quality and greatest attention to detail. Nearly all of their production is done by hand. Glass is in their DNA; they breathe it, sculpt it, refine and shape it. In the heart of Crystal Valley, they craft the light.

PRECIOSA Lighting, www.preciosalighting.com

MANUAL GLASS MANUFACTURING

GLASSTAR company specialises in hand-made coloured glass – the company offers unique and diverse products, with more than 200 hundred product types in a limited series. These include glass flowers, paperweights, fruit, vegetables, animals, clowns, vases, bowls, bells, napkin rings, glass candy, etc.

Ing. Romana Starová – GLASSTAR, glasstar@tiscali.cz



DIVERSITY OF TRADITIONAL TECHNIQUES

Svět skla has been working with diverse glass technologies for the past 25 years. The company specialises in the production of atypical glass, architectural glass as well as glass shaping and mainly focuses on fused sculptures and melts, bent glass, stained glass,

replicas of etched glass and acoustic glass. Svět skla manufactures glass components and also cooperates with architects and designers to make their ideas a reality with the help of its techniques. Glass products can be seen in many countries around the world, such as the United Arab Emirates, Qatar, USA, China, Hong Kong, Russia, Japan and most European countries.

Svět skla, www.svetskla.cz



NEW LOOK AT TRADITION

Design of EVPAS is based on traditional Czech glass. The company has broken away from redundancies and throwbacks, adjusted everything to its own taste and seeks simplicity, functionality, contrast and colour combinations. However, EVPAS has preserved the strongest feature, namely quality handwork, which has been synonymous with the Czech glassmaking craft for several decades. EVPAS creates non-traditional glass in the traditional way.

EVPAS, www.evpas.cz



DID YOU KNOW?

In December 2021, the Ministry of Culture of the Czech Republic decided to enter "Handmade Glass" in the List of Intangible Assets of Traditional Folk Culture of the Czech Republic. This registration is a key condition for the possibility of applying for registration on the UNESCO Representative List of the Intangible Cultural Heritage of Humanity. The application will be submitted in March 2022.

3 INNOVATION

Czech glass and porcelain have retained their quality, exceptional material processing and superb artistry. Czech glass succeeds on foreign markets and is popular among customers all over the world thanks to its excellent technical qualities and superior level of technology. Indeed, it was research, development and innovation that kick-started the recent growth in Czech production after 2011. Now, the glass and ceramics industry is extraordinarily successful once again. Czech glass installations can be found in the most luxurious hotels, palaces, airports, museums and luxury yachts.

Traditional handmade glass now accounts for only about one-tenth of domestic production. The rest is mainly taken up by industrial glass and production lines. A significant part of production in Czech glass factories is geared towards foreign markets. Glass fibre, imitation pearls and precious stones, safety glass and tableware glass are the industry's best performers.



INNOVATIVE MATERIAL: GLASS SHARDS

BROKISGLASS is the product of the eco-friendly practices of Janštejn Glassworks and BROKIS, whose collaboration has given rise to a unique new material made of glass shards. In the manufacture of lighting glass, up to 30% of each handblown piece is discarded. The primary motivation for establishing and developing the company BROKISGLASS was the need to

change the conventional perception of glass shards as waste, which was previously just hauled to a landfill, where it burdened the environment and had a negative impact on the character of the surrounding landscape. This innovative material brings a new dimension and aesthetic to glass, and its unique properties make it an excellent choice in architecture, construction, and interior and product design.

BROKISGLASS,
www.brokisglass.cz



STYLISH SHISHA PIPES

MEDUSE DESIGN was founded in 2005 in the Czech Republic. With the launch of the first collection called "CRAFT", they laid the foundation stone of a worldwide trend – a new category of shisha pipes was born – the stylish shisha pipe. Thanks to the unique design, huge amount of handwork and careful attention to the smallest of details, Meduse shisha pipes are among the absolute top class to be found and smoked from in the whole shisha world. The company itself carries out all stages in the processing of their unique shisha pipes – from the graphics

and industrial design, through development and prototyping, to the manufacture and finally distribution including the complete shisha catering service. Their greatest innovation is in work with a glass corpus. This glass corpus, the heart of a shisha pipe, is an exquisite example of the perfect connection of art and functionality. Moreover, its position at eye level enables you to watch comfortably the processes inside the pipe when smoking. Meduse pipes were the first shisha pipes in modern history to be served with fruit cocktails inside their glass corpus. The company was again part

of history – the birth of another growing world trend – adding fresh fruit to a pipe by which you can modify or influence the final taste and the aesthetic experience from your smoking. Furthermore, all Meduse shisha pipes can be equipped with different light modules that transform their pipes into magical light objects, which makes smoking an unforgettable experience. Those who have already had the opportunity to try out their shisha pipes served by trained shisha sommeliers know now the taste of the Meduse shisha experience.

MEDUSE DESIGN,
www.meduse-experience.com



UNIQUE, EXCLUSIVE AND INSPIRING

Vinolok is considered as one of the most elegant and creative stoppers for still wines, spirits, water, and oils. It's made from pure Bohemian glass that transforms every bottle into an exceptional vessel. Vinolok gives a brand the style of top-class quality, making any product a luxury article never to be forgotten. Vinolok is used for wines and spirits worldwide. The main producers come from France, Italy, Germany, Austria Spain, USA, Australia and Russia. It is not a coincidence that Vinolok is often chosen by organic or biodynamic producers. Glass – a harmless, clean, environmentally friendly, fully recyclable material – fits very well with their philosophy, but also with today's ecological

demands. 100% taste-neutral, the stopper is a technically precise product with a fixed shape and properties. Oenological properties of the Vinolok glass stopper are being tested by the Australian Wine Research Institute (AWRI), which has been verifying Vinolok's OTR (Oxygen Transmission Rate) performance. Vinolok has absolutely no impact on aroma and flavour and ensures the stable conditions after bottling. Among the unique properties of the Vinolok stopper are the ability to allow the wine to breathe and develop slowly. Vinolok allows easy opening and re-closing of the bottle. It is fully recyclable and offers amazing customisation and endless design options. Vinolok comes in 3 main product lines – Classic, Edge and Premium. **VINOLOK, www.vinolok.com**



TRADITIONAL CRAFT AND CUTTING-EDGE TECHNOLOGY

Creating exclusive designs is Preciosa's speciality. Their history has given them the foundation to design remarkable installations for any interior, while their in-house R&D team ensures these lights create an impact, make a statement and remain significant as interior styles continuously evolve. Research & Development Lab features a dark room; physical laboratory for testing extreme environmental conditions; earthquake proofing; and advanced electronic systems to create interactivity. They bring innovation to lighting through emotion, by involving the senses and making it memorable. **PRECIOSA Lighting, www.preciosalighting.com**

DID YOU KNOW?

The first glass nail file in the world is from the Czech Republic. It was patented in 1997 by Blažek Glass company. **Blažek Glass, www.blazek-glass.com**





SLUMPED GLASS TECHNOLOGY

Evans Atelier is a family glass company with a twenty-year history, fresh ideas and boundless creativity. In its collection of art glass interior accessories, you can find products that are entirely created in its workshop – from designs, through production and hand-painted decoration, to the final touches. The company cuts the glass sheets into the appropriate shape, grinds them, inserts them into hand-made ceramic moulds and moulds them into shape at high temperatures. This is so-called slumped glass

technology. Subsequently, bowls, plates, vases, wall decorations and other objects shaped in this way are hand-painted. Evans Atelier uses a unique way of painting, which was developed on the principle of so-called historical underpainting. It is a method of gradual glazing and layering of colours. Thanks to their overlapping and interweaving, a unique spatial effect is created. Then the painting is finally sealed in the oven, which ensures durability and resistance. Another group of exceptional products in its collection are hand-shaped blown glass objects. According to the designs, these are created exclusively in

friendly glassworks throughout the Czech Republic. Evans Atelier likes very much to participate in special projects, where they design and manufacture glass accessories or decorations for a specific interior at the customer's request, whether it is an apartment, hotel or yacht. The company's technology is flexible and enables both original piece creation and large-scale production. Evans Atelier enjoys creating, and it makes them happy when they can add a little colour into everyday life!

EVANS ATELIER,
www.evansatelier.com

LASVIT SHAPES THE FUTURE OF GLASS BY INTRODUCING CUTTING-EDGE KINETIC SCULPTURES

When history meets modern technology, it can create something exceptional. Staying true to this philosophy since its foundation in 2007 by Leon Jakimič, the leading spacial concept company LASVIT has been continuously pushing the boundaries of traditional Bohemian glassmaking further, taking it into the next millennium. Recently, LASVIT has unveiled a 16-meter-

high pendulum, which draws figures into the sand. The installation can be seen in Burjeel Medical City, a hospital in Abu Dhabi that aspires to become the most prominent medical facility in the whole region. The sculpture is studded with 300 breath-taking crystal elements and weighs almost 620 kilograms. Its movement is driven by three powerful engines, whose actions are guided by a special super-smart software. Looking at this giant jewel swaying in seemingly never-ending motion has a therapeutic effect, giving the visitors a sense of

peace and safety. And that is also where its name Art Therapy comes from. The installation furthermore pays tribute to ancient Middle Eastern calligraphy and innovation, using its sharp point to draw figures into the 50m² sand bed below. The number of motifs that can be depicted is almost limitless. Come closer and focus on the beauty that's being born in the fleeting moment, before the picture is swept away and a new one starts to be drawn.

LASVIT,
www.lasvit.com



DID YOU KNOW?

The United Nations General Assembly has declared 2022 the International Year of Glass.

4 GLASS AND ARCHITECTURE

Glass in architecture is dominated by the use of flat glass. This sector is one of the most important in the Czech glass industry.

LARGE FORMAT GLASS

The only manufacturer of large format flat glass in the Czech Republic is AGC Flat Glass Czech, a member of the AGC Group. AGC Glass Europe continues to demonstrate its commitment to constantly improving the environmental performance of its products. As the world's first and only glassmaker to have successfully obtained Cradle to Cradle Certified Bronze for its insulating glass products Thermobel and iplus/ipasol, AGC now offers the broadest portfolio of certified products at the Silver and Bronze level. Large quantities of flat glass are additionally processed for the automotive industry by AGC Automotive Czech and Saint-Gobain Sekurit CR. AGC Automotive Czech manufactures and sells approximately 25 million windshields a year.

GLASS CONSTRUCTION MATERIALS

The manufacture of glass for the construction industry, architecture and interiors is the domain of the company Saint-Gobain Construction Products CZ, which distributes its products and goods in the Czech Republic as well as in some other European countries. Other processors of flat glass for the construction industry are: Pilkington Czech, WMA-Glass

(production of insulating glass), and ERTL GLAS (production of one-sheet tempered safety glass). Vitrablok, a member of Seves Glassblock, is a manufacturer of glass blocks. The company Union Lesní Brána in Dubí u Teplic is active in the production of glass fibre thermal and sound insulation in the form of matting and panels (trademark ROTAFLEX Super®).

FLAT GLASS IN NUMBERS



Source: Annual Report of the Glass and Ceramics Industry for 2020
Average exchange rates (2020): 1EUR: 26,444; 1 USD: 23,196

CZECH GLASS IN WORLD ARCHITECTURE

Designed by Frank Gehry, a star of world architecture, the Louis Vuitton Foundation has been recently opened in Paris. This prestigious contract also included several Czech companies. From the glass sector, it involved GLASSOLUTIONS CZ, which co-operated as a supplier with the company SIPRAL. SIPRAL contributed 42 outdoor and 2 indoor glass facades to the project. GLASSOLUTIONS CZ meanwhile fitted various structures on the project with double glazing insulation, designed in compliance with specific safety requirements and acoustic characteristics, depending on where they were placed. The uniqueness of this building is also confirmed in the numbers: the project cost 3 bn CZK, the construction consumed twice as much steel as the Eiffel Tower and the project employed 200 architects and engineers.

GLASS IN INTERIOR – LIGHTING AND CHANDELIER

The work of Czech glass companies that specialise in interior glass - especially for lighting - combines traditional glass processing with the use of advanced technologies. They emphasise the artistic and design process. Foreign artists seek out

Czech glassmakers as collaborators to successfully implement their projects. Works by Czech glassmakers can be found in European and overseas museums and art galleries, private collections and at international art glass exhibitions.



RENOWNED PRODUCER OF INTERIOR LIGHTING

The Czech producer LUCIS ranks among the renowned European producers of interior lighting. The company's values are first class Czech-origin production, a team of motivated employees, a modern and timeless artist's design and a broad range of widely-usable products. As a light fixture and lighting producer, LUCIS places

great emphasis on maintaining and developing the tradition of the Czech glass industry with the aim to continue making high-quality products of Czech origin. The element of most light fittings is hand-blown three-ply opal glass. Glass hand-blowing is done in cooperation with leading Czech glassmakers, masters of their craft. Many other materials are also used, e.g.

Perspex acrylic glass, polyethylene, textiles and stainless steel. Fixtures are suitable for traditional projects, public buildings and private projects, commercial buildings, office buildings, schools and universities, but also for apartment interiors, houses and flats. LUCIS company exports its products worldwide. LUCIS, www.lucis.eu

FLAT GLASS AND MIRRORS

TRIGA partners has been – since 1993 – an important Czech company active in the processing of flat glass. It focuses on the design, construction and product development in the use of flat glass and mirrors in the interior. These products are processed following traditional and modern concepts and are combined with different kinds of lighting. Production of each component is on top with its productive technologies. Mirrors TRIGA are premium products.

Product development always tries to keep exacting demands of clients for quality and durability. TRIGA gradually developed three basic series of products called MHL, diodoors® and LC. Diodoors® series is designed primarily for use in home bathrooms. The MHL and LC series sees application mainly in hotel projects. TRIGA's satisfied customers are the largest furniture manufacturers in the Czech Republic, as well as a lot of wholesalers and importers in EU countries.

TRIGA partners,
www.trigapartners.com



DAZZLING GLASS HOUSE SHINES A NEW LIGHT ON CRYSTAL VALLEY

LASVIT's new headquarters is located in the town of Nový Bor in northern Czechia and it has rejuvenated the region's glassmaking tradition, renovating precious historic buildings with a cleverly designed master plan that accommodates both old and new. Two spectacular buildings have been newly added, and one is entirely clad in glass tiles inspired by the slate roof shingles typical for the region, merging tradition and innovation. These glass tiles combine transparency and technological prowess, combining the intrinsic beauty of glass and light with the local vernacular. The glass house appears as a lighthouse illuminating the valley, but it also performs a symbolic function in shining a light far beyond the borders of the Czech Republic. LASVIT is internationally renowned for its stunning glass sculptures that touch the soul of all who look upon them. But the company also devotes much time and energy to developing glass for architecture, creating extraordinary glass walls, functional facades and even glass overlays that can be assembled as easily as brickwork.

LASVIT, www.lasvit.com

DID YOU KNOW?

Top art installations made of Czech glass can be seen in several Dubai skyscrapers. Czech glass artwork is also presented at the Expo 2020 exhibition in Dubai. It is a work called Venus, made of lead crystal by the company Crystal Caviar and the academic painter and sculptor Vlastimil Beránek. This work of art is the largest polished cast glass sculpture in the world that weighs 243 kilograms and its diameter is 88 centimetres.

CONNECTING PEOPLE THROUGH LIGHT

Building on a 300-year-old legacy, Preciosa Lighting has turned the classic craft of lightmaking into breathtaking art. The company elevates the heritage of Bohemian crystal through contemporary lighting designs. The company is built on centuries of tradition and the unique art of master glassmakers from Crystal Valley. They honour this heritage and craftsmanship by creating innovative lighting products that stand the test of time. Preciosa Lighting styles range from individual luxury lighting to dynamic and interactive installations. Their projects can be viewed in hospitality spaces, luxury residences and palaces, cultural and government buildings and on board of yachts and cruise ships. Their installations received prestigious awards like Red Dot, [d]arc, Cruiseship Interiors, HD awards, etc. Preciosa Lighting is part of the Preciosa Group, one of the world's leading companies in the field of high-precision cut crystal components.

PRECIOSA Lighting,
www.preciosalighting.com

EXTRAORDINARY CRAFTSMANSHIP MEETS CONTEMPORARY DESIGN

The Czech premium lighting brand BROKIS stands for select design, unsurpassed quality and extraordinary craftsmanship of master Bohemian glassmakers. Conceived by renowned Czech and international designers, the brand's lighting collections have garnered international recognition and received numerous awards in prestigious design competitions both at home and abroad. The company combines handblown glass with other refined materials,

such as wood and manually pressed metal, in bold lighting compositions that push the boundaries of contemporary design. The BROKIS portfolio features modern functional lighting fixtures, decorative objects, and unique lighting solutions for architects and interior designers. With its own high-capacity glassworks rooted in more than 200 years of history, the company is free to experiment and develop innovative materials, techniques and technologies as well as design and create bespoke lighting solutions. BROKIS was founded in 2006 by entrepreneur Jan Rabell.
BROKIS, www.brokis.cz



GLASS HIGHLIGHTS

PRECIOSA crystal chandeliers can be found in Hong Kong's Ritz Carlton, the tallest hotel in the world.

Czech lights are unique: examples include the work of PRECIOSA in Ankara at the JW Marriott Hotel - the company manufactured a 7 m high chandelier. They also installed a 52 m long crystal wave made of cut beads.

Czech crystal chandeliers have appeared in the Hollywood film A GOOD DAY TO DIE HARD with

Bruce Willis. The creator in this case was the Czech company LUCKY GLASS, which exports its crystal chandeliers to almost 90 countries worldwide. Although the main market is Europe, LUCKY GLASS also considers Asian countries to be highly promising because the demand for Czech crystal and designer chandeliers is continually increasing.

Sparkling crystal: the Company Blažek Glass has come up with a new concept

of LEC, i.e. Light Emitting Crystal. The acronym is a play on the abbreviation LED (Light-Emitting Diode).

Czech glass in the designs of Louis Vuitton: the company ASTERA was the only successful candidate who applied to produce special glass elements for the luxurious boutique of the Louis Vuitton brand on the Champs-Élysées in Paris

BOHEMIAN ARTISTRY AND FINEST RAW MATERIALS

ELITE BOHEMIA was established in 1996 as one of the first private companies to re-establish the tradition of fine chandelier production in the newly democratised economy of the Czech Republic. Their founders are the same dedicated and knowledgeable craftsmen, who currently manage daily operations and continue to maintain the highest standards in production and design. As one of the finest and largest crystal chandelier producers in the world, ELITE BOHEMIA combines centuries

old Bohemian artistry, the finest raw materials and the latest technology to offer unparalleled custom production capabilities. They decided to create the separate offer of table lamps. The company uses high quality materials and traditional and new manufacturing processes during its production. Their main objective as well as aspiration is satisfying their customers through the continual creation and introduction of new designs to provide beautiful and functional lighting throughout the world.

ELITE BOHEMIA,
www.elitebohemia.cz



EXCEPTIONAL CZECH STAINED GLASS

The company Skloart has been producing stained glass for 29 years. It makes stained glass especially to its own design, but also works with world-class artists. This technique is used for the production of partition walls, illuminated ceilings, light images, windows, doors and small gift items, including lamps. In production, it uses classical lead technology, the Tiffany technique and sandblasting. Recently, the company has been specialising in hand painting on glass, when the colours are fired at 600 °C. It carries out experiments with flat glass, using cast iron glass, sea stone, light and semi-precious stones. Skloart creates three-dimensional sculptures and objects and doesn't shirk the beautification of utility glass either. The company regularly exports to the Netherlands and its clients include customers from all over Central Europe, Russia and Japan as well as galleries in New York and Paris. One of its latest works of art is an illuminated glass ceiling and stained-glass windows at New York Central Station designed by prominent American artist Kehinde Wiley. **Skloart, www.vitrazes.kloart.cz**



YEARS OF CHANDELIER-MAKING TRADITION

The family company Wranovsky Crystal is based in the north Bohemian region, which has a glassmaking tradition dating back to the 18th century. From the heart of this region, Josef Wranovsky started manufacturing crystal chandeliers more than 25 years ago. The lighting industry has changed dramatically during this time and they have always been on the forefront of these changes. Quality of materials, tradition and customisation – those are the values of the Wranovsky brand. And they have seen more appreciation of these values as people have been inundated in the low-quality production in all industries around the world. Today, Wranovsky chandeliers shine in more than 50 different countries and 6 continents. The Wranovsky artisans have for generations passed down their

knowledge of the beautiful craft of chandelier making. The years of tradition and experience in such a delicate craft cannot be imitated or mechanically replicated. All light fixtures they manufacture are unique. There are never two exact copies anywhere in the world. Each chandelier is the collective work of people, who have dedicated their lives to this craft. It is not only hand-made manufacturing that makes the chandeliers so unique. It's the customised production too. Gone are the days of mass production. With all the possibilities available, chandeliers today are a reflection of the owner's taste and values. Wranovsky can create extraordinary custom-made lighting based on just a small sketch on a piece of paper. And truthfully, they love the challenge.

WRANOVSKY CRYSTAL,
www.wranovsky.com

DESIGN LIGHTING BRAND TO BRING DELIGHT AND BEAUTY

BOMMA creates outstanding lighting collections for both private and public interiors. From small to oversized, BOMMA products combine contemporary design, traditional craftsmanship and dedication to quality. Their products are designed to bring emotion, delight and beauty to both traditional and modern spaces. They impress through their inventiveness, quality and, often, an awe-inspiring size. BOMMA lights are intended to draw attention as stunning

centre-pieces, creative groups or if you wish, large clusters that fill entire rooms. BOMMA's state-of-the-art production facility enables master craftsmen to constantly push the boundaries of glassmaking. All crystal pieces are hand-made, skirting along the edge of what is humanly and technically possible. Yet, BOMMA provides a technologically advanced environment that elevates hand production to a new level, ensuring both precision and exceptional quality.

BOMMA, www.bomma.cz



LIGHTINGS OF TIMELESS ELEGANCE

The third generation of the family business LUCKY GLASS continues the tradition of manufacturing and selling timeless crystal lightings, directly to customers around the world. The company offers a wide range of Bohemian crystal chandeliers, wall lights and table lamps at reasonable prices as well as high-quality workmanship, lightings of various designs, colours, materials, cut decors, coating and sizes. Currently, people from more than 100 countries worldwide rejoice in Czech hand-made crystal lightings made by LUCKY GLASS in their homes and interiors. One of their greatest successes is lighting the ballroom with the chandeliers in action scenes of *A Good Day to Die Hard*, starring Bruce Willis. Lighting up the interiors of Buckingham Palace in Victorian drama by LUCKY GLASS lighting fixtures represents another important achievement for their work.

LUCKY GLASS, www.luckyglass.cz

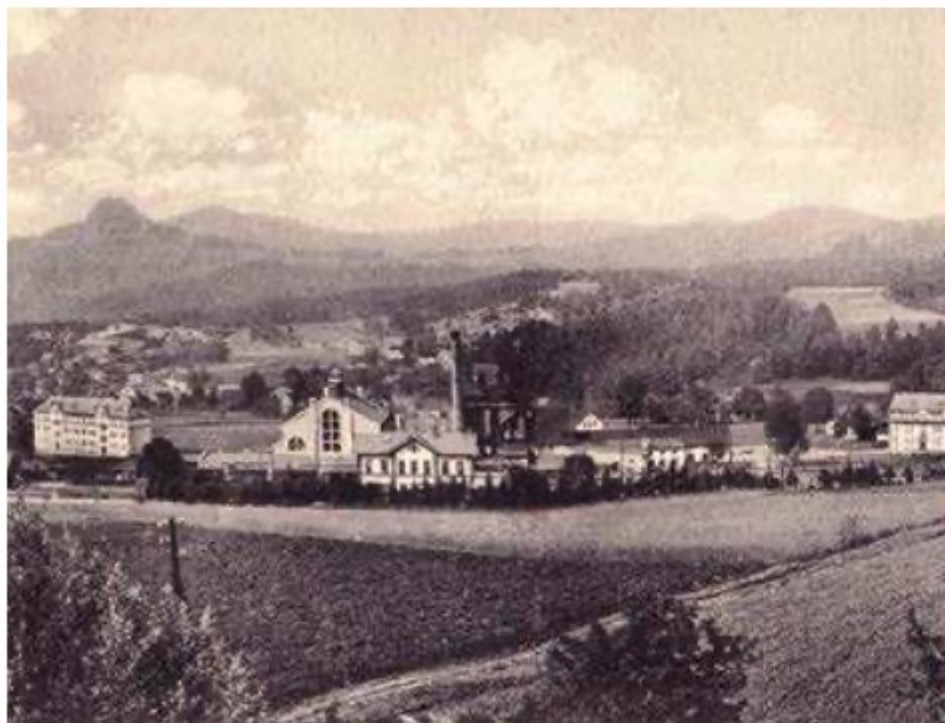


HIGH QUALITY HAND-CRAFTED CHANDELIERS

Clartés Bohemia is a Czech manufacturer of glass, crystal and chandeliers. All products by Clartés Bohemia are 100% made in the Czech Republic. Glass and Bohemian Crystal parts for their delightful chandeliers are produced in their own glass factory. The company is one of the few companies in the world preserving the traditional manufacturing procedures, so parts of their chandeliers are crafted and treated by hand. The products therefore meet

the highest expectations of quality. At every stage of the process, they make sure that their clients enjoy the creative process and the cooperation runs as smoothly as possible. Words of praise from their clients are the best reward for their efforts along with the satisfaction coming from the fact that they lived up to the expectations entailed by the ethos of Made in the Czech Republic. Their excellent reputation among customers has also become their best marketing asset and word of mouth their best marketing tool.

Clartés, www.clartes.com



DID YOU KNOW?

The glass factory of Clartés was built in 1905, and it brought French engineers from the Eiffel Tower to develop the steel structures of the building itself. In the North of Bohemia, a stone's throw from the German border, the factory has been a delightful landmark ever since.

CZECH GLASS IN THE WORLD

Czech glass installations can be found in the most luxurious hotels, palaces, airports, museums and luxury yachts.

Lasvit: Giant dragons made of metal and glass are displayed at the Imperial Palace Hotel on Saipan Island in the Pacific. Each dragon is 32 metres long and their bodies are covered with 2.5 million crystals.

Preciosa Lighting: Czech crystal installation can also be seen at Terminal 1 at Singapore Changi Airport. This unique and dynamic lighting installation called Garden Metamorphosis shows a tropical garden, which connects the interiors of the airport itself with the streets of Singapore as a city full of life. The lighting installation is very impressive, more than 10 metres long and 9 metres wide. It consists of 650 crystal components, shaped in smaller and bigger butterflies or plant leaves.

Lasvit: Hotel La Mamounia in Marrakesh is decorated with two crystal works by this Czech glass and design company. The light installation is located in the Salon de Thé tea room and it is a 6-metre-high and 3-metre-wide crystal chandelier, shining directly above the fountain. The chandelier consists of hundreds of glass parts and the style harkens back to traditional Moroccan architecture inspired by muqarnas –

decorated ceiling vaults typical for Arabic culture.

Preciosa Lighting: Installation at the entrance to the Great Scotland Yard Hotel in London shows the clock made of clear and matte glass, which is complemented by metal parts with a polished stainless-steel finish, golden brown and brown patina, weighing 450 kilograms. Another example is the light installation above the staircase at Le Méridien Denver – a chandelier inspired by the traditional American poplar. The manufacturing of custom lighting installations requires not only skills and detailed processing, but also great invention.

Lasvit: The large lighting installation called Twirl was presented by Lasvit in Mexico – in the atrium of the luxury hotel St. Regis Mexico City. The installation symbolises a waterfall that flows through mythical underground caves, which were reservoirs of drinking water in the past. In total, 358 pieces of Czech glass were used for the manufacture of this installation.

Preciosa Lighting: A giant lighting installation called Crystal Swell, which is inspired by sea waves adorns a new section of the Los Angeles Airport Terminal. The installation changes colours and freely penetrates through the floors of the terminal. The glittering waves are 17 metres

high, the weight of the entire light installation reaches 4,000 kilograms and total length of the crystal ribbons is 65 metres. Furthermore, this project had to meet various specifics, especially the most effective fastening due to frequent earthquakes in the area. Therefore, the installation fixture had to be designed to withstand the tremours of 7 degrees on the Richter scale.



Lasvit: The company's chandeliers hang, among other things, in the Dubai Metro or the restaurant of the world's tallest building, the Burj Khalifa. Another lighting installation was made for the Dubai Opera Company. This lighting installation consists of 27,000 unlit components and another 3,000 fitted with lights. The length of the installation is 28 metres and it weighs several tons.

Preciosa Lighting: Chandeliers from this company are also installed in the luxurious Mandarin Oriental Jumeira Hotel in Dubai or on the yacht of businessman Roman Abramovich. The monumental lighting, which consists of 124 geometric shapes, also attracts the attention at the Sheraton Dubai Mall reception. The installation weighs 1,759 kilograms.



LUXURY BESPOKE LIGHTING

Hunat Glass is a Czech company specialising in the design and production of bespoke lighting. The company is proud to carry on the centuries-old craft of hand-blown Bohemian crystal glass whilst combining it with contemporary design. A commitment to an uncompromising level of detail allows Hunat Glass to contribute to many exquisite projects worldwide, ranging from five-star hotels, casinos and luxury boutiques, to high-end private residences that count several royal palaces amongst them.

HUNAT,
www.hunatglass.com

COMBINING TRADITION, CRAFT AND INNOVATION

ARTGLASS is a producer of original and design-led lighting made from high-quality materials with a high proportion of manual craftsmanship. ARTGLASS has been active in the market for almost 30 years and operates with great success in 45 global markets. The company works very closely with renowned Czech glassmakers and world-famous designers. ARTGLASS's great strength is the company's in-house team

of progressive designers, whose original and unique ideas in terms of high-quality design now adorn countless interiors around the world. ARTGLASS offers its clients a comprehensive solution for lighting, from the design and consultation phase through to advice and assembly, and the company also has a specially trained team of assemblers, who install its products in clients' premises around the world.

ARTGLASS, www.artglass.cz



INNOVATIVE ARTISTIC LIGHTING INSTALLATIONS

Kolektiv Atelier is a boutique company, based in Nový Bor, Czech Republic – the real heart of the Bohemian glassmaking tradition. The company connects a diverse artistic sphere – from design to fashion and creates installations that are not only innovative and high quality, but also tell a story that reflects the unique lifestyle of each of the clients. Under one roof, you can find the fused glass studio, glass painting studio, metalworking studio, glass cutting studio or an engraving studio. Kolektiv projects and

lighting installations can be found all around the world – from Europe and USA to Middle East. Company's goal is to provide partners with the finest products that follow and reflect the best Czech glass-making tradition. Kolektiv narrows and values bonds between a designer, artisan and investor. They want their clients to have full control over the origin and quality of both goods and materials, compliance with the best technologies and practices, top quality and original design of the final product.

Kolektiv Ateliers, www.kolektiv.cz

5 GLASS JEWELLERY

Besides glass, porcelain and ceramics, enjoy a unique place in the world glass jewellery and glass Christmas ornaments, both very popular all over the planet. In Asia, customers appreciate the long tradition, high quality and health and safety of the products. Czech fashion jewellery is popular not only in Asia, but perhaps surprisingly also in Africa, where it is used by the locals to create their

own items. They swear by Czech fashion jewellery because of its established history. The combination of skilled manpower and the solid technological facilities used in production. African clients also greatly prize the colourful variety in which our fashion jewellery comes. Traditional Czech beads are famous with indigenous tribes around the world, as well as with global fashion

designers.

In Europe, demand is primarily for luxury products and fashion jewellery made of beads, though designer products and more extravagant creations are also popular. The main players in this area include companies of the PRECIOSA GROUP, the world's leading producer of cut crystal, machine cut chatons, beads and other fashion jewellery.



DID YOU KNOW?

Paying tribute to his Bohemian heritage, cult fashion icon and footwear designer Manolo Blahnik revealed a unique pair of handmade shoes for Prague Exhibition of The Art of Shoes in 2017, embellished with crystal trimmings from PRECIOSA.

GLASS JEWELLERY IN NUMBERS

1.8
billion CZK

Export of fashion jewellery and components from the Czech Republic in 2020.

4 000
tonnes

Of the seed beads produced at Preciosa Ornela.

150 000
sorts shapes and sizes

Shapes and sizes of fashion jewellery show diversity.

16 460
shades

Range of the colours in manufacturing of fashion jewellery is very wide.

Source: Annual Report of the Glass and Ceramics Industry for 2020, The Czech Statistical Office; Cross-border movements of goods, HS 4: 7018 (Glass bead, imitation pearls and 7117 (Imitation jewellery)), Preciosa Ornela
Average exchange rates (2020): 1EUR: 26,444; 1 USD: 23,196

BEAUTY PAGEANT CROWN DESIGNER

The family company SENYR Bijoux has been one of the most important producers of jewellery in the Czech Republic since 1900 and has been a very successful participant in various international fairs since then. Thanks to its being

a partner of the Czech Miss beauty pageant, SENYR Bijoux has achieved even larger success and popularity: winners of the Czech Miss used to proudly sport crowns by SENYR bijoux. The company is very well known not only in the Czech Republic but worldwide as well. Many important figures

from world cultural and political life enjoy wearing jewellery by SENYR Bijoux. It's the natural choice of all women who are eager to complement their beauty with handmade jewels of unique design.

SENYR Bijoux,
www.senyr.cz



CZECH CRYSTAL COMPONENTS

PRECIOSA, which produces beads and fashion jewellery, focuses 99% of its production on foreign markets, especially Asia, the Middle East and Brazil. PRECIOSA Crystal Components is a leading global supplier of machine-cut components made of the highest quality Czech crystal. It produces mainly semi-finished products for the fashion jewellery, jewellery and fashion industry. PRECIOSA ORNELA is one of the world's most significant producers of a wide range of glass products made from glass rods and lampworking rods, technical and utility glass and all types of glass seed beads and beads. The traditional range of glass seed beads and beads is currently being developed under the PRECIOSA Traditional Czech

Beads brand, which guarantees top quality and a wide range of shapes, sizes and colours. PRECIOSA BEAUTY continues the tradition of Czech glassmaking by designing and manufacturing elegant jewellery, decorations and luxury fashion accessories that impress customers in the Czech Republic and around the world. Thanks to the talent and through the work of its glassmakers, Preciosa Beauty can bring joy and beauty to the world. Every year, they present new collections of necklaces, earrings, rings or bracelets with crystals. One of the ultimate favourite necklaces is a crystal hummingbird called Flying Gem.

PRECIOSA,
www.preciosa.com,
PRECIOSA Ornela,
www.preciosa-ornela.com,
PRECIOSA Jewellery & Decoration,
www.preciosabeauty.com

GLASS JEWELS AND FASHION ACCESSORIES

JSB – Bijoux has been active on the market for almost 25 years and is currently one of the leading companies in the Czech Republic, producing jewellery and fashion accessories. The company's portfolio includes more than 10,000 kinds of jewellery, a large part of which is still produced in different colours. JSB – Bijoux focuses on creating its own product designs and high-quality

product lines, which are sold with its own label or with customer logo. Main selling products include earrings, necklaces, sets, bracelets and rings. Furthermore, JSB – Bijoux produces pens, pencils, crayons, buckles, cufflinks, pendants, lighters or USB flash drives. Last but not least, the company focuses on custom production and stickers (such as decorative chairs, mirrors, paintings, etc.).

JSB – Bijoux,
www.jsb-bijoux.cz



GLASS BEADS AND ROSARIES

PAS Jablonec is one of the two largest manufacturers of glass beads in the Czech Republic and one of the largest manufacturers of rosaries made of glass beads in the world. By melting the glass stem in the glassworks, the company produces glass rods and sticks, which are further transformed into pressed glass beads. Final products are displayed in glossy or matte design, round or in hundreds of

different shapes. Pressed beads can be further processed into so-called fire polished beads, faceted beads or MC beads. This technology creates perfect cutting and high brilliance. PAS Jablonec also designs and manufactures ready-made jewellery according to their own designs or cooperates with designers from all over the world.

PAS Jablonec,
www.pas-jablonec.eu

QUALITY STRASS JEWELLERY

AG PLUS is one of the leading manufacturers of Jablonec strass jewellery in the Czech Republic. The quality of the jewellery is characterised by meticulous and detail-focused manual production. The company designs not only its own collections but also individual custom-made collections. The result is an original jewel that makes every woman shine. In addition to

strass (paste) jewellery, AG PLUS also offers strass blanks, such as strass borts or strass buttons, which are very popular articles in the clothing industry. From among its fashion jewellery components, it offers rondells, balls, sew-on stones, plastic borts, strass chains and last but not least hand-pressed cut glass buttons. The company also includes a fully equipped and modern surface treatment plating shop.

AG PLUS,
www.agplus.cz



6 GLASS CHRISTMAS ORNAMENTS

The Czech Republic is an important exporter of Christmas ornaments. The tradition of Christmas decoration manufacturing dates back to the middle of the 19th century when the custom of Christmas tree decorating spread across Europe. Czech glassworks also began to produce the first blown decorations, when production in eastern and northern Bohemia thereafter quickly gained considerable significance..

In the 1930s, Czech glass ornaments became world-renowned and a fast boom in the production led to the end of importing Christmas decorations into Czechoslovakia and a significant entrance into the global market. In 1937, Czechoslovakia was already a major manufacturer and exporter in the field of blown Christmas decorations worldwide. A collection of Christmas decorations was awarded the 'Grand Prix' award at the world exhibition in Brussels in 1935. The skills of Czech manufacturers were again awarded with the gold medal 'EXPO 58' at the world exhibition in Brussels in 1958.

HAND-MADE CHRISTMAS ORNAMENTS

The company Vánoční ozdoby, DUV-cooperative specialises in the traditional production of glass Christmas decorations, and it is the biggest producer of hand-made and hand-painted glass Christmas decorations in the Czech Republic. It is also one of the main producers in the EU. All products are hand-made and no machinery is involved. In the production, the company uses the worldwide colour standard that consists of 600 shades in up to

6 effects for each of them – gloss, matte, frost lacquer, porcelain, metallic paint and a so-called shell finish. In 2016, the Vánoční ozdoby company participated in a 2016 retailer competition in the Czech Republic, and it was awarded the Rainbow Dolphin for the successful innovation of products that characterise the Czech production tradition.

Vánoční ozdoby, DUV-cooperative,
www.christmasornamentsofbohemia.com



In the 1990s, Czech Christmas ornaments again began to enjoy global prestige for being synonymous with quality and tradition. Since then, Czech firms are among the most important in Europe. Even today, most of the production is handmade. Each piece of glass is blown into shape and then pressed into a mould for perfect detail. The ornaments are then silvered, painted and finished with glitter. Czech glass Christmas ornaments combine excellent craftsmanship and enhanced technology. The technology of production is constantly innovated in terms of productivity, profit, environmental protection and the European Union standards. The Czech Republic is also a traditional producer of Christmas ornaments using glass beads. The production of glass beads started in the mid-19th century and was intended for bijouterie.



CHRISTMAS ORNAMENTS WITH GLASS BEADS

The family company Rautis specialises in production of traditional Christmas ornaments made from unique glass beads. Rautis is proud to be the only manufacturer of this type of glass bead ornaments in the world, producing over 20,000 different kinds. Rautis has managed to preserve most of the original work procedures and save the old forms as well as patterns. In addition, the production of beads has remained, where it started a hundred years ago – in the Krkonoše mountain village of Ponikla. In 2020, the production of Christmas decorations from glass beads has been inscribed on

UNESCO's representative list of the Intangible Cultural Heritage of Humanity. Currently, the company has approximately 1,000 various forms for blowing beads and more than 20,000 patterns – from classic Christmas stars, angels and figurines, through various animals and flowers, to the vehicles and miniature reproductions of everyday objects. Rautis also offers Christmas and festive table decorations and materials for its own creative work as well as Christmas decorations according to the customer's wish. You can experience the entire production and embellishment of Christmas decorations through excursions and workshops.

RAUTIS, www.rautis.cz



DID YOU KNOW?

The technique used at the company RAUTIS to make pearl ornaments was inscribed on the UNESCO Representative List of the Intangible Cultural Heritage of Humanity in 2020. The pearl craft from the Krkonoše Mountains has thus become one of the most unique skills in the world.

TRADITIONAL HAND-MADE PRODUCTION

Ozdoba continues a tradition of family glass company founded in 1933. Since then, the craft has been passed down from generation to generation with the fifth generation being currently engaged in production. The company is a significant producer of Christmas decorations and presents the

handwork, uniqueness and originality of each product. Round flasks, figurines and other shapes are made with a 100-year-old technique called „mouth-blowing“ and subsequent hand decoration. Ozdoba stands for traditional method, craftsmanship and quality as these are the symbols of Czech glass Christmas ornament production and evokes the atmosphere of Christmas.

Ozdoba, www.ozdoba.cz



CZECH MANUFACTURER OF GLASS ORNAMENTS AND DECORATIONS

Glassor Decorations follows the tradition of glass production dating back to the 13th century. As a brand they were launched on the world in 2002. The showroom and brick-and-mortar store are located in Liberec in the north of the Czech Republic. They provide their services of product development, custom design, sourcing, trading and exporting. They are known for glass ornaments in the shape of baubles, but they also offer a wide range of glass figurines, such as cars, animals or traditional christmas cones and nuts. The designers come up with new collections of ornaments each year, finding inspiration all around the world, while merging traditional motifs with modern trends. They experiment with colors, textures and

lighting effects. Current trends are manifested both in design and the way people celebrate the holidays in their households. All ornaments are hand-painted and made from high quality glass using the traditional blowing technique. Each piece produced goes through the skillful hands of several painters and blowers. The assortment includes a rich offer of glass decorations for not only a Christmas tree, but also New Year's and wedding table, Valentine's Day or Easter. Glassor regularly presents its products at world design exhibitions, such as Christmasworld in Frankfurt, Germany, NY NOW in New York, United States or MAISON&OBJET in Paris, France. Glassor also runs its own division in Germany, United States and France.

GLASSOR, www.glassor.eu



7 GLASSWARE

Czech domestic glass is exported all over the world: over 67% goes to European countries while other major customers include China, the Russian Federation, Egypt, Turkey, the USA and Indonesia (2020).

Czech manufacturers offer a very broad range of products for both the homeware and hospitality sector. Czech production is especially strong in the field of art glass, cut lead crystal, domestic glass decorated with painting, line drawing, staining, high enamel and engraving, handmade domestic glass, historical replicas, blown glass, etc.

HOME & DECOR

Czech production includes a complete range of glass tableware – from glassware for everyday use and household items through to luxurious cut and handmade glass. Most Czech manufacturers also specialise in manufacturing luxury gift items, trophies and decorative items.

UNIQUE VINTAGE TECHNIQUES

Founded in 1712, GLASSWORKS NOVOSAD & SON HARRACHOV is the oldest glass factory in Bohemia, still in operation. In over 300 years of its existence, the factory has developed a truly unique set of production and decorating skills that distinguish Glassworks Harrachov from others. Collections such as Airtwist and Exquisite are perfect examples of vintage techniques still being used in today's production. Nowadays, the factory specialises in customised job-order production of luxurious stemware and barware. However, it is also capable of making decorative items such as: candle-holders, vases, bowls, glass bells, paperweights and more. All its products are

manufactured from lead-free barium crystal (crystalline), using mouthblown and handmade techniques only. Moreover, the company is able to produce stemware in more than 30 different colours. The glassworks has been privately owned by the Novosad family since 1993. Today, the factory employs about 100 workers, including about 30 glass-blowers. Production capacity stands at about 30,000 stemware glasses per month. Minimum order quantity typically stands at 300 units for stemware, and 150 units for other glassware.

**GLASSWORKS NOVOSAD
& SON HARRACHOV,**
www.sklarnaharrachov.cz



WORLD'S LEADING PRODUCER OF LEAD CRYSTAL

Stunning brilliance, dazzling lustre, high refraction index, high level of production standards and technology are the main characteristics of the products created in Crystal BOHEMIA glassworks, a global manufacturer of lead crystal and lead-free crystalline, boasting rich history and extraordinary tradition. Crystal BOHEMIA was founded in 1876 in Poděbrady. In 2020, it was expanded by the former Crystalite Bohemia glassworks in Světlá nad Sázavou and currently offers the machine-blown and machine-pressed items for every day, as well as for occasional use. The whole wide range includes thousands of different types of products, in simple or in complex shapes, various sizes and with plain or lavish decoration, as well as traditional utility and gift items such as vases, bowls, baskets, candlesticks and other decorative products. A significant part of the assortment represents drinking glassware, such as stemware and tumblers. The world-famous trademark Bohemia "B" registered and recognised in more than 80 countries around the world is a guarantee of the unique origin, high quality, outstanding properties and artistic value of the products.

Crystal BOHEMIA,
www.crystal-bohemia.com



MODERN AND TRADITIONAL, YET MASTERFULLY EXECUTED DRINKWARE COLLECTIONS

Dating back to 1857, Moser has been presenting its unique drinkware collections to the world. They are exclusively made by hand, following the precise methods used by the ancestors of today's glassmaking masters. The first-rate Moser crystal is set apart by its lustre and remarkable hardness, which allows for detailed cutting and engraving. Thanks

to this feature, admirers of high-grade glass can select not only modern collections but also opulent sets that bear a handcut design, engraving or oroplastic. Apart from clear crystal, the glasses are also available in sophisticated colour options, which were developed as Leo Moser drew inspiration from various gemstones. It comes as no surprise that the Moser drinkware sets adorn the festive tables of royal families and an array of embassies. Although the production is flawlessly traditional, Moser doesn't shy away from modern

technology when communicating with its clients. The glassworks' assortment is available for online purchases on its website. Here you'll also find the innovative MyMoser configurator, which opens the world of custom-made products to literally everyone. The select drinkware sets included in the configurator can be created to meet your preferences, which translates to custom, detailed engravings, oroplastic and even monograms.

MOSER, www.moser.com



CENTURIES-OLD TRADITION OF CZECH CRYSTAL

Gold Crystal carries on the centuries-old tradition as a Czech crystal glass manufacturer under the common name of Bohemia Crystal. The beauty and grandeur of the materials used allows company designers to create a great variety of forms, which in return allows them to present the broad public with a remarkable spectrum of shapes and materials. Their creations are highly valued by customers in many countries all over the world, wherever these unique products are distributed. Over the years of its existence, Gold Crystal has always tried its best to meet the often unusual requirements of all its customers and satisfy their particular priorities.

**Gold Crystal,
www.gold-crystal.cz**



KITCHENWARE

Objects from the rich assortment of kitchenware are among the most successful exports in the Czech Republic. Since the 19th century, Czech glassmaking has been characterised by its unique blend of craftsmanship, technological advancement and original design, developed in the studios of academy trained artists.

CUT & LUXURY CRYSTAL

The Czech Republic is a major exporter of so-called Czech crystal, which is desired for its quality. Moreover, Czech glass is characterised by its specific artistic workmanship. Several glassworks in the Czech Republic are engaged in the production of exclusive handmade glassware, which tends to be highly coloured, richly decorated by hand and gilded.



BOROSILICATE GLASS

One important and traditional manufacturer is KAVALLIERGLASS, which specialises in kitchenware and tableware using Simax, special glass, with high chemical, heat and frost resistance (-40°C / $+300^{\circ}\text{C}$) and is thus suitable for use in ovens and microwaves as well as storage containers in the freezer. The Simax range with its attractive design is also perfect as serving ware. New "Ice&Fire" concept combines properties of glass and character of products. The durable SIMAX glass will endure the fiercest heat of fire and the ruthless cold and hardness of ice. SIMAX is the glass that can tame the elements. KAVALLIERGLASS made the 180L borosilicate glass kettle that is five times the traditional size of a standard Simax Matura. It was entered into the Czech book of records on the date of the 180th anniversary of the establishment of KAVALLIER glassworks.

KAVALLIERGLASS, www.kavallier.cz





HAND-MADE ORIGINALS AND SPECIAL TECHNIQUES

All products of Astra Gold are hand-made originals. Astra Gold produces a unique commodity by improving Bohemia crystal and Venetian glass with gilding, embellishments, high enamel and relief technology. The sole owner is the family Tengler, which has maintained the unique skills for generations. The family roots of the company and the handmade production enables the mastering of the products, such as a protective layer and very high enamel. The production is also known for the special technique of luminous enamel patterns.

Astra Gold,
www.astragold.com

NEW MODERN LITE DESIGN

The Merry Crystals company offers traditional hand-made Bohemian crystal in 24% PbO Titanium quality. In conjunction with this new proprietary technology and the skills of their glassmakers, decorators, cutters and engravers, the company is able to achieve distinctive optical quality in the products. The new collection introduces wholly new colour shades in unique (rare) shapes and novel decorations that combine a deep cut with precise engraving skill. A new engraved gold collection has also been

designed. The company is inspired by history, presented in a new modern lite design. Merry Crystals offers a wide range of a luxurious utility crystal products – a whole range of tableware, for example wine sets, whisky sets, aperitif sets, bowls, vases and containers. Everything is available in clear crystal, as well as in violet and pink shades, or with engraved gold workmanship. The company works with designers to create and produce luxurious lights, crystal sculptures, sports trophies and designer domestic crystal products.

Merry Crystals,
www.merry-crystals.cz

^



^



8 DECOR AND DESIGN

Czech glass production is characterised by close collaboration between glassworks and leading designers. The result is gift and decorative items that win awards around the world. Among those companies aimed at creating designer glass is, for example, the Bomma brand that cooperates with best designers both in the Czech Republic and abroad. In 2016, Bomma won the Red Dot Award for the TIM luminaire collection by the Olgoj Chorchoj Studio and for the Ignis collection by Eduard Herrmann.



DECORATIVE AND PANEL GLASS MADE THROUGH FUSING

Company BDK-GLASS is an exceptional company within the framework of glass industry thanks to its unique production technology, which draws on the results of the State Glass Research Institute in Hradec Králové. The key programme there is the manufacturing of decorative and panel glass using the technology called fusing. The company produces mainly decorative and utility bowls, trays, plates, glass candle holders, gift

articles or hangers with various motives. Also, custom-made glass panels for windows and doors are produced. Although all products are hand-made, the company uses the manufacturing processes and technologies that enable as large variability, rationality and productivity as possible. The whole production is completely ecological, it is in fact basically non-waste. Since its beginning, the company has supplied its products mainly to foreign markets in developed European countries and in North America.

BDK-GLASS, www.bdk.cz



THE TOUR DE FRANCE TROPHY IS FROM THE CZECH REPUBLIC

The AJETO glassworks, member of the LASVIT Group, stands out for its sophisticated glass trophies as well as art items of cutting-edge design. Since 2011, they have been supplying the famous Tour de France bike race with the winner's trophy, each year designing with a new and daring shape.

**LASVIT AJETO,
www.ajetoglass.com**

CRYSTAL GIFTS AND DECORATIONS

Preciosa Jewellery & Decoration is a member of the Preciosa Group, building the internationally renowned Preciosa brand from

the Czech Republic as a symbol of quality, perfection, purity and beauty. Preciosa Jewellery & Decoration complies with the customers' wishes by offering designer crystal gifts, decorations and jewellery, which brings joy to

people throughout the world with its sparkle, fantasy and elegance. **Preciosa Jewellery & Decoration,** www.preciosabeauty.com

DID YOU KNOW?

One of the most famous designers in the Czech Republic is Rony Plesl, who is known mainly for his innovative glass design and his intriguing stone sculptures, as well as for his interior design and drawing. His contemporary glassware is unique in the sense that he focused on uranium glass, the production of which has been all but halted throughout the continent of Europe. Besides producing uranium glass pieces, Plesl also cooperates with other glass manufacturers including the leading companies Moser, Barovier, Ajeto and Květná, and with Sahm, a German company where Plesl has been the main designer since 2009. As a designer, Plesl cooperates with Denizli by Pasabahce (Turkey) and Preciosa (CZ). Proof of his genius in the field of glass design is the fact that his art is represented in many art collections. His work can be found all over the world and if you wish to see any of his creations you can visit for example Walt Disney World where many of his glass sculptures are on display, the Prague luxury restaurant Mlýnec, where there is a lovely glass chandelier, and in Hamburg, Germany, where there is a glass tower designed by Plesl. The recipient of many design awards, Rony Plesl stages exhibitions in the Czech Republic and abroad.

^



INNOVATIVE DESIGN

The Olgoj Chorchoj Prague studio has gained an international reputation over the years for high quality, beautiful designer objects and has been presented with many awards. Besides glass, porcelain and jewellery, the design studio that was founded in 1990 during a workshop at the Vitra Design Museum also provides innovative architectural services and design. The designers at Olgoj Chorchoj are considered to be the best of the best in the field of glass design by glass experts from around the world. In 2006, Olgoj Chorchoj also started to cooperate with the famous Pilsner Urquell Company by producing a series of beer glasses for the global market.

ORIGINAL CZECH CRYSTAL ART

The key to the success of the glass company Halama, which has more than 70 years of tradition, is the first-class product quality. Among other items, the company also designs and manufactures vases, bowls, ashtrays and statuettes as well as liqueur or perfume sets of the antique Art Nouveau and Art Deco style. Founded in 1932, the company gained a number of awards in the 1930s, such as the Award for Excellence at the Paris and Berlin international exhibitions. The last success in the original Halama's history was a thank-you letter from the Moroccan sultan from January 1948. Soon after, in February 1948,

the company had to stop operation. All supplies, means of production, machines and processed production as well as buildings and lands were nationalised. Then in the autumn of 1994, after decades of suspended production, František Jr., the son of the original founder, began to revive the original designs and the secret of manufacture. The following years have been marked by the expansion of production and the acquisition of the first exclusive representatives on the world markets. The Halama family company works in the spirit of the original philosophy – to create jewels of lasting value and beauty.

The mission of the company is to offer end-users unique quality products that are presented through selected authorised dealers in each market. For this reason, the company is mainly focused on cooperation with exclusive representatives in individual countries. Over 90% of the production is exported, especially to the Near and Middle East markets, but also to Asia. The Halama products are used by the highest constitutional authorities of the Czech Republic (Office of the President, Senate of the Parliament, Ministry of Foreign Affairs or Ministry of Industry and Trade).

Halama, www.halama-glass.cz



ATYPICAL HAND-MADE GLASS

ASTERA is a glass atelier in the famous glass town of Nový Bor. The atelier specialises in exclusive customized hand-made glass as well as crystal production and is ready to create atypical elements for architecture, unconventional interior accessories and decorations, unique trophies, original gifts, modern designer glass objects, replicas of old glass artistic pieces and almost anything you can think of. The company appreciates performance with originality.

Flexible batch manual production of glass and crystal is perfect not just for making sport trophies. Awards designed exclusively are the important detail that will brighten up the winners' experience. Astera production includes the wide range from vases to artistic object and the best implementation can be achieved thanks to the individual approach. Astera's work consists of precisely handcrafted compositions and proud use of the traditional manual glass making and shaping techniques. **ASTERA, www.astera-glass.cz**



REMARKABLE DESIGN AND TIMELESS APPEARANCE

BOHEMIA JIHLAVA successfully follows on from years of tradition set by Bohemia Glassworks, whose history dates back to 1845. Over 150 years ago, Jihlava glassworks were instrumental in spreading the fame of Czech crystal far beyond the frontiers of this country. Their dedication to keeping this tradition alive in combination with

high quality standards guarantees a unique design. Designers always strive for a timeless and unmistakable appearance to enhance the functionality of each unique piece. The company views glass as a magical living substance, as a material with lively sparkle and brilliance in every detail.

**BOHEMIA CRYSTAL
JIHLAVA,
www.bohemiajihlava.com**



COMPLEMENTING MODERN INTERIORS IN A UNIQUE WAY

Studio AZ-Design is a company dealing with traditional, manual glass processing, but also current trends. The company provides high-quality glass processing for interior or exterior, traditional craftsmanship, design in glass, trophies, sculptures and many more. Under the hands of the glass masters, unique glass products are created and not only by its shape and colour, but also quality of processing. Aleš

Zvěřina wants the best for the customers and his main motto is: "uniqueness, tradition and art". Uniquely designed glass products intended for lovers of clean simple design will complement not only modern interiors. Studio AZ-Design inserts artistic hallmark into the glass products and the products are designed to be modern in nature. In this way, not only beverage sets and vases have been created, but also a number of glass objects intended for interiors.

Aleš Zvěřina & Studio AZ-Design,
www.az-design.cz



CRYSTAL ART AND INVESTMENT COMBINED IN ONE

The decorative works of the Moser brand are exceedingly desirable all over the world. In addition to the traditional models, which the glassworks have produced now for over 160 years, both Czech and foreign designers add their own modern designs. Thus, Moser's crystal pieces not only adorn classic interiors but also contemporary-minded spaces. Every artefact is a perfect reflection of handmade mastery, thanks to which, the Moser glassworks has become well-known by admirers of crystal glass. The lead-free crystal in both its clear and coloured designs is refined by dozens of

pairs of hands. The glass is adorned with an impeccable cut, engraved motifs, oroplastic and hand-painted decorations. It's precisely these challenging artistic pieces that become successful investment items. Moser is also known as an exclusive producer of custom projects. It's here that prominent worldwide brands, designers and lovers of crystal allow their designs to come to life. Moreover, with the MyMoser configurator absolutely anyone can become a glass designer. In this online tool, the selected piece (for instance, the classical Diva vase or its modern counterpart, Spheres) can be tailored, as the client applies their own creative concept to bring it to life.

MOSER, www.moser.com

TIMELESS ELEGANCE AND CONTEMPORARY DESIGN

Rüchl Crystal brings elegance to everyday moments and special occasions through original design and top quality. Building on tradition, Rüchl has contributed to the renaissance of the Czech glassmaking craft, representing the peak of this tradition. Rüchl

Crystal selects the best century-tested glassmaking methods and brings them to a new level. Historic patterns from the family archive now come alive in the context of modern shapes and pastel tones, telling the story of the ancient Rüchl glassmaking family. The Rüchl glassworks is renowned for products in both traditional and modern designs created under the

leadership of art director Rony Plesl. Rüchl thus contributes to the renaissance of Czech fine cut crystal, representing the peak of this traditional craft. Rüchl Crystal believes that top design, quality craftsmanship and the desire to create powerful emotion, elegance and beauty hold a rightful place, even in our times.

Rüchl Crystal, www.ruckl.com



HOTEL AND CONTAINER GLASS

HOTEL AND CONTAINER GLASS

In terms of quality, Czech glass for the catering sector meets all the requirements for functionality while offering eye-catching designs.

DID YOU KNOW?

Mattoni has become famous through its collaboration with the Pininfarina studio and two Czech designers. Jan Čapek has designed an unconventional cover for a limited-edition gift pack. The designer Rony Plesl, meanwhile, created the exclusive glasses that accompanied the new bottle for Aquila and Mattoni in Europe's most prestigious restaurants.



TAILOR-MADE COLLECTIONS FOR DINING

AXUM BOHEMIA focuses on products with original design as well as on interior decorating accessories. The company offers complete product lines, unique individual pieces and special "tailor-made" collections for dining, serving and presentation in hotels or restaurants. A prevailing part of the production is earmarked for export.

The biggest customers in the Czech Republic are multinational hotel networks. The largest buyers abroad are predominantly in the countries of Western Europe like Germany, Austria, Italy, Great Britain, Finland and also Switzerland or Russia. The company has built up a strong position on overseas markets too, such as Japan, India, the Persian Gulf territory, Egypt, Chile and Maldives.

AXUM BOHEMIA,
www.axumbohemia.com/horeca



UTILITY DESIGN

The Czech design for drinking glasses has become famous thanks to companies such as Mattoni, Budweiser Budvar and Pilsner Urquell, all of whom have had their drinking glasses designed by Czech designers.

UTILITY DESIGN

Crystalex builds on the world-renown tradition of Czech glassmaking and takes it into the 21st century and beyond. Originally from Nový Bor, a town that has for centuries been the centre of Northern Bohemian glass industry, Crystalex offers the best of Czech glassmaking craftsmanship. The company is the biggest producer of drinkware in all Czechia and is among the foremost glass producers worldwide. Over 90% of the production is exported to over 80 countries around the world. Crystalex ships the unique spirit of Bohemian glass and crystal to the EU, Russia, Ukraine and Eurasia as well as to clients in the Americas, Africa, Australia or Eastern Asia. The company offers smart, on-time service, which is streamlined for the needs of a modern, fast-paced world while remaining ecologically conscious and wholeheartedly dedicated to sustainability.

Crystalex, www.crystalex.cz



10 PORCELAIN

the tradition of porcelain production in the Czech Republic began in the 18th century. Even then, bohemian porcelain was valued for the high quality of its material and glaze as well as for its diversity of shape and stunning painted decoration. The first porcelain factory was founded in 1792 in Horní Slavkov. The local designers and artists focused mainly on a variety of shapes and decorations for coffee cups, which

became popular gift products. One of the oldest Czech porcelain companies, founded in 1794, is Thun from Karlovy Vary. It is currently the largest Czech porcelain manufacturer and is engaged in the production of household and hotel porcelain. It has a special cookware programme, children's porcelain and custom products for large international chains.



PORCELAIN IN NUMBERS

21 companies

Devoted to the production of ceramics or porcelain in the Czech Republic.

3 255 employees

Manufacturing porcelain requires a precise handcraft.

3.11 billion CZK

Revenues from sales of own products from porcelain and the ceramics industry in 2020 (porcelain and ceramics 27%, technical and sanitary ceramics 73%).

Source: Annual Report of the Glass and Ceramics Industry for 2020 (for companies with more than 50 employees), Average exchange rates (2020): 1EUR: 26,444; 1 USD: 23,196

BLUE TRADITION

A traditional and highly in-demand product at home and abroad is the classic Czech “blue onion” porcelain. The history of blue onion porcelain dates back to the 18th century, when the production of porcelain in Europe started using a lot of oriental patterns.



HOTELS AND CATERING

The Czech Republic has a very strong position when it comes to manufacturing porcelain for the hospitality and catering sector.

Professional tableware and cookware is currently produced in the Czech Republic not only by the established domestic brand G. Benedikt, but also under the global brand names Lilien Austria and Langenthal Swiss. Another Czech porcelain company, Rudolf Kämpf, has made its reputation based

TRADITIONAL PORCELAIN IN CONTEMPORARY DESIGN

Český porcelán has been on the market for 150 years. It manufactures functional hotel and decorative porcelain in different shapes and designs. Its best-known product, the blue onion pattern porcelain, often referred to as a blue-blood product, is exported throughout the world. The company manufactures nearly 700 different shapes with more than 3,000 different designs. The new items of Český porcelán at Dubí specifically include the Opera tea, coffee and dinner sets. These are not intended exclusively for prestigious events, but are also suitable for modern homes. We are confident that our range will appeal to even the

most demanding customers of all ages. Examples of our products are the Praha Eco young-generation porcelain, and the Bohemia set, designed by Professor Jiří Pelcl, which meet the expectations of both households and restaurants with their timeless design. Our production technologies conform to the conditions and parameters required for use in automatic dishwashers and microwave ovens. The company's motto is to offer a wide range of high-quality products at friendly prices contributing to customer satisfaction.

Český porcelán,
www.cesky.porcelan.cz

on originality and craftsmanship, and it is currently the only factory in the Czech Republic where porcelain is made by hand. This porcelain factory mainly produces limited editions and unique items. The porcelain company also has its own brand LEANDER, which is focused on industrially manufactured porcelain for mass consumers. Despite its brief existence, the brand has managed to gain popularity worldwide. The LEANDER brand is now one of the most popular and universally recognised brands of porcelain.

It enjoys well-deserved popularity and respect throughout the world.





EXCLUSIVE HAND-PAINTED COLLECTIONS OF PORCELAIN

More than 100 years ago, there began the story of the porcelain manufactory in Loučky near Karlovy Vary – Rudolf Kämpf's porcelain factory. In the beginning, there was the dream of building a factory in the very heart of the finest deposits of the raw minerals needed for classic porcelain production in close proximity to the city, where the first porcelain piece was created on the territory of the Czech Republic, a factory where its production could compete with the best European producers. This dream became a reality under the leadership of Rudolf Kämpf, and the factory began supplying its products under the RGK (Rudolf Grünlas Kämpf) brand. In the 1990s, products began to be branded with the new Leander brand, which also acquired worldwide fame. Both brands are used until this day. Rudolf Kämpf brand represents the most exclusive collections, which are hand-painted or richly decorated by precious metals of the highest quality. Leander brand represents collections that are less decorated, but also intended for customers, who expect the highest quality hard paste porcelain for daily use. The current generation of craftsmen follows this tradition, producing their products with traditional procedures based on manual work, and the products of both Rudolf Kämpf and Leander brands are sent all over the world to their customers, who are able to appreciate their beauty and timelessness.

Rudolf Kämpf, www.rudolfkampf.cz



RUDOLF KÄMPF'S LEANDER

Shape Sonata with very traditional decoration is also produced in Rudolf Kämpf porcelain manufactory under the Leander brand.

LEANDER, www.leander.cz



PROFESSIONAL PORCELAIN MANUFACTURE G. BENEDIKT

With more than a hundred years of tradition, the company of G. Benedikt is one of the traditional producers of porcelain in the Karlovy Vary region. Its history started in 1882, when Benedict's

brothers established a porcelain manufacture in Dvory. In honour of the founders, the manufacture was named "Gebrüder Benedikt". The company of G. Benedikt became an exclusive producer of porcelain for hotels and gastronomy in the Czech Republic. In this very competitive environment, the Czech company has been gaining ground through

its perfect service and the high quality of the products. The important markets include the countries of the European Union and USA. The company is also penetrating the markets of the United Arab Emirates, Mexico and Asia.

**G. Benedikt Karlovy Vary,
www.gbenedikt.cz**

HOTEL AND HOUSEHOLD PORCELAIN WITH TRADITION

The porcelain produced in Thun 1794 in Nová Role, Czech Republic is typical European hard porcelain – mixture of refractory white clay (kaolin), feldspathic rock and quartz, fired in glost kilns at about 1,400°C. All those raw materials are of Czech origin. Every step of production from raw materials to decoration is regularly controlled and analysed. There are 3 porcelain factories in Thun 1794, own screen-

print factory and machinery work producing some types of machines for porcelain production. Factories are located in Karlovy Vary region, one factory is located in Klášterec nad Ohří. Thun 1794 production is based on long tradition and history. Porcelain is been produced in the Czech country for more than 220 years. Thun 1794 has all the technology and technical equipment on European level, such as tunnel kilns, chamber kilns, fast firing kiln, isostatic presses, equipment for high pressure casting, cup lines

etc. The porcelain made in Thun 1794 is tested according to health limits, it is therefore Pb and Cd free, acid-resistance, thermal shock, abrasive resistance. Porcelain Thun 1794 complies with all European Standards. Factories of Thun 1794 produce 100% in the Czech Republic, no outsourcing or supplies from abroad. Collection of porcelain is wide – household porcelain, hotel porcelain, children sets, oven dishes, mugs, gift articles.

Thun 1794, www.thun.cz



11

CONTACTS

INTEREST GROUPS AND PROFESSIONAL ORGANISATIONS

Association of Manufacturers of Glass and Jewellery, www.svsb.cz

This body represents the interests of the fashion jewellery industry and the related glass industry in the Czech Republic. Association members include the most important manufacturers of glass and fashion jewellery (metal, glass from other materials, exclusive, rosaries), jewellery semi-finished goods (glass beads and pearls, machine cut and polished jewellery stones, special stones, metal parts, trimmings), lamps and chandelier trimmings; coins and medals, as well as some manufacturers of jewellery from precious metals and stones, and other products (cut crystal figurines, gift items, buttons, Christmas ornaments and artificial flowers).

Czech Art of Glass, www.czechartofglass.com

A marketing platform for the glass and fashion jewellery industry. Czech and Moravian Glass Cluster (branch association of Czech Art of Glass). The mission of the cluster is to create an effective and dynamic platform for Czech and Moravian glassmaking, one which offers an interactive space for companies, research institutes and professional schools, together with supporting, supply, research and other complementary institutions.



Czech Glass Alliance, www.sanssouciint.com

The Czech Glass Alliance brings together manufacturers and educational institutions in the glass industry. It offers a wide range of glass and crystal products which are primarily intended for interior decoration. They include lamps and light fittings, exclusive cladding made from mosaic tiles and large glass panes, decorative elements in architecture, domestic and decorative drinking glassware, trophies and art objects. Czech Glass Alliance members have access to all the technology of glassmaking – from the traditional, such as hand-blowing, engraving, cutting and painting, through to the state-of-the-art ones, such as fusing and slumping, vacuum deposition or laser cutting. Within the product lines it offers, the Czech Glass Alliance provides comprehensive solutions tailored to each client. It carries out design work at the general conceptual level, as well as in response to quite specific ideas. It designs technical and manufacturing solutions while carrying out the construction, manufacture and final installation. It is engaged in the continuous development of new design concepts and technology solutions.

Association of the Glass and Ceramic Industry, www.askpcr.cz

The association of the producers of flat, container, technical, domestic and lighting glass, glass and mineral fibre, household porcelain, household and sanitary ceramics, trade organisations, manufacturers of machinery, technical equipment and service organisations, and professional schools.

**Czech Glass and Jewellery Centre of Cultural Excellence,
www.czechglasscompetence.cz**

The main mission of the centre is the management of www.czechglasscompetence.cz, (www.czechglasscompetence.com), an interactive Internet database for the benefit and promotion of Czech glass and jewellery. This Internet portal is available in two languages, English and Czech. Those interested in current production and design will be able to access a nationwide register of active manufacturers and designers. At present the site boasts up to 300 companies and 100 designers. Producers may actively participate in the appearance of their presentations by forwarding their own texts, photographs and other media.

**Czech Glass Society,
www.czech-glass-society.cz**

This is a voluntary professional organisation that brings together individual and collective members from the glass and jewellery industries, as well as their related fields (including suppliers).

**Czech Selection – Design & Export,
www.czechselection.eu**

The civic association Czech Selection - Design & Export is the patron organisation for Czech companies engaged in production, high quality Czech design and export. These companies focus primarily on areas such as glass, furniture, jewellery or watch-making. Members of the association include only those companies whose production instils the essence of Czech design and which is unique in its own way. The only criteria are quality, professionalism and a first-rate attitude.

**Silicate Association,
www.silis.cz**

This association brings together subjects involved in geological exploration, the production and processing of silicate raw materials, the production of ceramic and brick

products, research, development, design, business and professional pedagogical activities.

PRODUCERS

**AG PLUS,
www.agplus.cz**

AG Plus is one of the leading manufacturers of Jablonec strass jewellery in the Czech Republic.

**Aleš Zvěřina & Studio AZ-Design,
www.az-design.cz**

Studio AZ-Design inserts artistic hallmark into the glass products, and the products are designed to be modern in nature. In this way, not only beverage sets and vases have been created, but also a number of glass objects intended for interiors.

**ARTGLASS,
www.artglass.cz**

ARTGLASS is a leading European manufacturer and supplier of traditional crystal chandeliers as well as modern design lighting.

**ASTERA,
www.astera-glass.cz**

ASTERA is a glass atelier specialised in exclusive customised handmade glass as well as crystal production and is ready to create atypical elements for architecture, unconventional interior accessories and decorations.

**Astra Gold,
www.astragold.com**

Astra Gold produces a unique commodity by improving Bohemia crystal and Venetian glass with gilding, embellishments, high enamel and relief technology. The sole owner is the family Tengler, which has maintained the unique skill for generations.

AXUM BOHEMIA,
www.axumbohemia.com/horeca

AXUM BOHEMIA focuses on products with original design as well as on interior decorating accessories. The company offers complete product lines, unique individual pieces and special "tailor-made" collections for dining, serving and presentation in hotels or restaurants.

BDK-GLASS,
www.bdk.cz

BDK-GLASS is an exceptional company within the framework of glass industry thanks to its manufacturing of decorative and panel glass using the technology called fusing.

BOHEMIA CRYSTAL JIHLAVA,
www.bohemiajihlava.com

Bohemia Crystal Jihlava is a traditional Czech manufacturer of glassware with long history over 150 years.

BOMMA,
www.bomma.cz

BOMMA focuses on artisanal craftsmanship, innovative technology and contemporary design. In their manufactory delicate hand-blown glass in small to oversized dimensions is combined with highly sophisticated modern technology developed in-house. Currently, BOMMA is one of the most highly acclaimed glass brands, particularly thanks to intensive cooperation with designers.

BROKIS,
www.brokis.cz

BROKIS is a premium lighting brand, which stands for select design, unsurpassed quality and extraordinary craftsmanship of master Bohemian glassmakers. The company portfolio features modern functional lighting fixtures, decorative objects, and unique lighting solutions for architects and interior designers.

Český porcelán,
www.cesky.porcelan.cz

Český porcelán has been on the market for 150 years. It manufactures functional hotel and decorative porcelain in different shapes and designs. Its best-known product, the blue onion pattern porcelain, often referred to as a blue-blood product, is exported throughout the world. The company manufactures nearly 700 different shapes with more than 3,000 different designs.

Clartés,
www.clartes.com

Clartés Bohemia is a manufacturer of glass, crystal and chandeliers. All products by Clartés Bohemia are 100% made in the Czech Republic.

Crystal BOHEMIA,
www.crystal-bohemia.com

Crystal BOHEMIA is one of the biggest manufacturers of lead crystal, lead-free crystalline and tableware glass. It is a holder of the world-famous Czech trademark Bohemia "B".

Crystalex,
www.crystalex.cz

Crystalex builds on the world-renown tradition of Czech glassmaking and takes it into the 21st century and beyond. The company is the biggest producer of drinkware in all Czechia and is among the foremost glass producers worldwide.

ELITE BOHEMIA,
www.elitebohemia.cz

Elite Bohemia company is one of the finest and largest crystal chandelier producers in the world.

EVANS ATELIER,
www.evansatelier.com

Evans Atelier is an art glass studio focused on contemporary interior accessories design.

EVPAS,
www.evpas.cz

EVPAS creates non-traditional glass in the traditional way and its design is based on traditional Czech glass.

G. Benedikt Karlovy Vary, www.gbenedikt.cz
G. Benedikt has become an exclusive producer of the porcelain for hotels and gastronomy in the Czech Republic.

GLASSOR,
www.glassor.eu

GLASSOR is a family-owned company engaged in the field of design, production, sales and export of Christmas and seasonal decoration made of glass following the age-old tradition of glassmaking with glass-blowing and hand-painting of Christmas decorations.

GLASSWORKS NOVOSAD & SON HARRACHOV,
www.sklarnaharrachov.cz

GLASSWORKS NOVOSAD & SON HARRACHOV is the oldest glass factory in Bohemia, still operating. Nowadays, the factory specialises in customised job-order production of luxurious stemware and barware. All its products are manufactured from lead-free barium crystal (crystalline), by using mouth-blown and handmade techniques only.

Gold Crystal,
www.gold-crystal.cz

Gold Crystal carries on the centuries-old tradition as a Czech crystal glass manufacturer under the common name of Bohemia Crystal. The beauty and grandeur of the materials used allows company designers to create a great variety of forms.

Halama,
www.halama-glass.cz

Halama designs and manufactures vases, bowls, ashtrays and statuettes as well as liqueur or perfume sets of the antique Art Nouveau and Art Deco style. Over 90% of the production is exported, especially to the Near and Middle East markets, but also to Asia.

HUNAT,
www.hunatglass.com

Hunat Glass is a design glass studio with our glassworks, where we create custom-made lighting fixtures and decorative glass items, which are manufactured from hand-blown crystal glass.

Ing. Romana Starová – GLASSTAR,
glasstar@tiscali.cz

GLASSTAR specialises in handmade metallurgical stained glass – the company offers unique and diverse products, with more than 200 hundred product types in limited series.

JSB – Bijoux,
www.jsb-bijoux.cz

JSB – Bijoux has been active on the market for almost 25 years and is currently one of the leading companies in the Czech Republic producing jewellery and fashion accessories.

KAVALIERGLASS,
www.kavalier.cz

Kavalierglass offers a very wide variety of products which span the areas of domestic, industrial, laboratory and technical glass, pipes and industrial apparatus. Most of Kavalier's products are distributed under our brands Simax.

Kolektiv Ateliers,
www.kolektiv.cz

Kolektiv Ateliers' mission is to provide partners with the finest products that follow and reflect the best Czech glassmaking tradition. Their focus is on enhancing the craft of glassmaking with fresh modern feel through new design ideas.

LASVIT,
www.lasvit.com

LASVIT is a manufacturer of unique works of glass, including bespoke lighting installations, glass art-works and award-winning collections.

LUCIS,
www.lucis.eu

LUCIS ranks among the renowned European producers of interior lighting. The company is based on a first-class Czech-origin production, a team of motivated employees, a modern and timeless author's design and a wide range of versatile products.

LUCKY GLASS,
www.luckyglass.cz

LUCKY GLASS delivers its crystal chandeliers to more than 100 countries worldwide. Although the main market is Europe, Lucky Glass also considers Asian countries to be highly promising, because the demand for Czech crystal and design chandeliers continually increases.

MEDUSE DESIGN,
www.meduse-experience.com

Meduse Design pipes belong to the absolute top class to be found and smoked from in whole shisha world thanks to the unique design, huge amount of hand work and precise work focusing on the smallest of details.

Merry Crystals,
www.merry-crystals.cz

Merry Crystals offers traditional handmade Bohemian crystal and offers a wide range of a luxurious utility crystal products. Everything is available in clear crystal, as well as in violet and pink shades, or with engraved gold workmanship.

MOSER,
www.moser.com

MOSER, a glass factory in Karlovy Vary, is representing traditional, manual glass manufacturing. In these glassworks, products are made principally by hand and only from crystal glass. Each product is therefore a genuine original due to its unique design and manual processing.

Ozdoba,
www.ozdoba.cz

Ozdoba continues a tradition of family glass company and is a significant producer of Christmas decorations presenting handwork, uniqueness and originality of each product.

PAS Jablonec,
www.pas-jablonec.eu

PAS Jablonec is one of the two largest manufacturers of glass beads in the Czech Republic and one of the largest manufacturers of rosaries made of glass beads in the world.

PRECIOSA, www.preciosa.com
PRECIOSA Lighting, www.preciosalighting.com
PRECIOSA ORNELA, www.preciosa-ornela.com
PRECIOSA Jewellery & Decoration, www.preciosabeauty.com

RAUTIS,
www.rautis.cz

RAUTIS is a family company who carries on the tradition of hand manufacturing of glass-bead Christmas decorations,

producing over 20,000 different kinds.

Rüchl Crystal,
www.ruckl.com

Rüchl Crystal manufactures an extensive range of cut lead crystal in a wide variety of decorations bringing elegance through original design and top quality. The Rüchl glassworks is renowned for products in both traditional and modern designs created under the leadership of art director Rony Plesl.

Rudolf Kämpf,
www.rudolfkampf.cz

Rudolf Kämpf represents the most exclusive collections, which are hand-painted or richly decorated by precious metals of the highest quality. Its other brand, Leander, represents collections, which are less decorated, but also intended for customers, who expect the highest quality hard paste porcelain for daily use.

SENYR Bijoux,
www.senyr.cz

SENYR Bijoux has been one of the most important producers of jewellery in the Czech Republic since 1900 and has been a very successful participant in various international fairs since then.

Skloart,
www.vitraze.skloart.cz

Skloart has been producing stained glass for 29 years. It makes stained glass especially in its own design, but also works with world-class artists.

Svět skla,
www.svetskla.cz

Svět skla focuses on stained glass technology and mosaics.

Thun 1794,
www.thun.cz

Thun 1794 is the largest Czech porcelain manufacturer. The company produces household porcelain, hotel porcelain, porcelain for children and custom-made products for large international chains in its production range.

TRIGA partners,
www.trigapartners.com

TRIGA partners is a company focusing on design, construction and product development in the use of flat glass and mirrors. These products are processed in the traditional and modern concepts and are combined with different kinds of lighting.

Vánoční ozdoby, DUV-cooperative,
www.christmasornamentsofbohemia.com

Vánoční ozdoby, DUV-cooperative specialises in the traditional production of glass Christmas decorations, and it is the biggest producer of handmade and painted glass Christmas decorations in the Czech Republic.

VINOLOK,
www.vinolok.com

Vinolok is the most elegant and creative stopper for wines, spirits, water and oil. Vinolok is made from pure Bohemian glass. Despite being completely leakproof, the unique properties of the Vinolok stopper allow the wine to breathe and develop slowly.

WRANOVSKY CRYSTAL,
www.wranovsky.com

Wranovsky Crystal has been designing and manufacturing original Bohemian crystal chandeliers for more than 25 years. Family company of Josef Wranovsky is based in the north Bohemian region, which has a glassmaking tradition dating back to the 18th century.





CONTACT

Czech Trade Promotion Agency
Štěpánská 567/15
120 00 Prague 2
Czech Republic
Phone: +420 224 907 820
E-mail: info@czechtrade.cz
Website: www.czechtradeoffices.com

