



# EXPORT

CATALOGUE

Bidfood

# WE EXPORT ALL OVER THE WORLD

WE CURRENTLY EXPORT PRODUCTS, BOTH OUR OWN AND THOSE OF OUR TRIED-AND-TESTED PARTNERS, TO 25 COUNTRIES AROUND THE WORLD.

THIS AMOUNTS TO ALMOST 3,000 TONNES OF GOODS PER YEAR, A FIGURE THAT CONTINUES TO GROW EACH YEAR.



The international IFS Food standard assesses production facilities. Bidfood operates to the highest standards in food safety, compliance with legislation and quality management systems.



IFS Logistics certification covers the storage and distribution of food. International certification authorities regularly confirm the highest quality standards of our warehouses, employees and distribution vehicles.



The Hazard Analysis and Critical Control Points (HACCP) system prevents risks to food safety and health. The proper set-up and operation of the system is key to ensuring high quality. It is audited annually by independent external auditors.



The Marine Stewardship Council (MSC) promotes sustainable fisheries. As a producer and distributor of fish products, Bidfood is one of the few holders of this certificate that attests to organic fishing, processing and marketing.



The Aquaculture Stewardship Council (ASC) oversees the environmentally sound and socially responsible farming of fish and seafood. Bidfood's certification covers processing and distribution.

## BEST SELLERS:

Our best sellers are ready meals, sous-vide meat, ice cream, dry goods and fish products. In the last three years we have shipped almost 2,800 tonnes of ice cream abroad.

They are followed by ready meals with just under 2,000 tonnes, sous-vide products (1,500 tonnes), dry goods (1,200 tonnes) and fish products (800 tonnes).



**Finland**

**Sweden**

**Estonia**

**Denmark**

**Lithuania**

**England**

**Latvia**

**Germany**

**Poland**

**Netherlands**

**Belgium**

**Slovakia**

**Ukraine**

**Austria**

**Hungary**

**Switzerland**

**Slovenia**

**Serbia**

**Romania**

**Italy**

**Croatia**

**Bulgaria**

**Greece**

**Vietnam**

**New Zealand**

# DEAR CUSTOMERS,



You have just received the Bidfood catalogue containing products that have been a success all over the world.

As we are not only a distributor but also a producer, we know very well what it takes to produce quality food. In our production operations we not only comply with, but also hold our suppliers to the same high standards. That's why you can always rely on the products we deliver to be of top quality. We have been in the business for over 35 years and in that time we have built a strong position. We are one of the largest sous-vide meat, ready meals and ice cream producers in the Czech Republic. We were the first to introduce sous-vide products to the Czech market. We are also a top supplier to the catering industry. The experience we have attained and the background of the strong multinational Bidcorp Group, the second largest food service distributor in the world, allow us to export our products.

We have selected some of the most interesting products from amongst our product range of 6,500 items for you. We produce many of them ourselves and the rest are sourced from our trusted partners.

We believe that you will find what you are looking for from our catalogue and at the same time you will appreciate the added value of specific products. Whether it's the quality of preparation, the exceptional taste of the products or the time (and money – because time is money) that they save in the kitchen.

## content

• <b>COMPANY HISTORY</b> .....	<b>5</b>
• <b>OUR PRODUCTION</b> .....	<b>6</b>
• <b>OUR BRANDS</b> .....	<b>7</b>
• <b>SOUS-VIDE</b> .....	<b>9-13</b>
• <b>READY MEALS</b> .....	<b>14-17</b>
• <b>FISH</b> .....	<b>18-21</b>
• <b>HAMS, SAUSAGES &amp; BACON</b> .....	<b>22-26</b>
• <b>PASTRY</b> .....	<b>27</b>
• <b>ICE CREAMS</b> .....	<b>28-35</b>
• <b>VEGETABLES</b> .....	<b>36-41</b>
• <b>FRUITS</b> .....	<b>42-43</b>
• <b>ICE</b> .....	<b>44</b>
• <b>OUR PARTNERS</b> .....	<b>45</b>



## company history

Our story is in many ways reminiscent of the American Dream. It is about great determination, hard work, business talent, seizing opportunities and luck. Without any of those we would not have ended up where we are now.

How did it all start? It began with an advertisement in a newspaper looking for a sales representative for the Danish company Nowaco. The environment in which Bohumil Volf arrived in 1990 was in no way pleasant. Unlike the famous garages overseas, he began building his business in a transportable module box in Prague 5. Initially, his business involved exporting Czech goods abroad. However, Volf sensed an opportunity to also start importing goods. This is how Czechs got the first taste of the fish fillet that made the brand famous. Volf succeeded, and three years later he began to build his first freezing plant in Kralupy nad Vltavou. His business was booming.

In 1997, the Bohumil Volf-led company acquired Slezské mrazírny in Opava, at that time the largest producer of frozen goods and ice cream in the Czech Republic. A year later, a fish packing plant was opened in Kralupy nad Vltavou and more success followed. A modest one-man operation had grown into a giant that outgrew its Danish parent. It was therefore sold in 2009. The company obtained its strategic partner, the South African company Bidvest, later renamed Bidfood. Thanks to this strong investor we were able to continue to grow. We have expanded our production (beef, pork, sous-vide, venison and meat products) and opened new distribution depots.

- 1990 sales office opened**
- 1992 Nowaco Czechoslovakia s.r.o. established**
- 1993** first freezing plant completed in Kralupy nad Vltavou
- 1996** Nowaco Slovakia s.r.o. established
- 1997** Slezské mrazírny Opava acquired
- 1998** fish packing plant in Kralupy nad Vltavou
- 2003** meat processing plant in Kralupy nad Vltavou
- 2004** seafood processing plant in Kralupy nad Vltavou
- 2006** BHJ Garant acquired and a depot opened in Velké Meziříčí
- 2009** Gastrostudio opened  
arrival of a strategic partner, the South African company Bidvest
- 2010** production of frozen Bagetier pastries in Opava
- 2011** Slovak ice cream manufacturer Frost acquired, and a second Slovak depot opened in Prešov
- 2012 name changed to Bidvest**
- 2012** game animal processing plant
- 2014** sous-vide meat production
- 2015** fresh vegetable and fruit distributors Tekoo and Tekoo SK acquired  
distribution depot Plzeň opened and Mrazírny Plzeň-Dýšina acquired
- 2017 Bidvest Group becomes Bidfood**  
new frozen fish processing plant in Kralupy nad Vltavou
- 2018** production of sausages in Dýšina  
Chlumec nad Cidlinou distribution depot
- 2019** Opava meat and game animal processing plant  
Víglaš cross-dock (Banská Bystrica region, Slovakia)
- 2021** Bidfood Hungary Kft. established
- 2021** cross-dock Planá u Českých Budějovic
- 2022 new fresh fish packing plant Kralupy nad Vltavou**
- 2025** Planá u Českých Budějovic distribution depot

**3000**  
EMPLOYEES

**650**  
DISTRIBUTION  
VEHICLES

**11**  
DISTRIBUTION  
POINTS IN  
CENTRAL EUROPE

**5**  
MANUFACTURING  
PLANTS

**2**  
PROFESSIONAL  
GASTRO STUDIOS

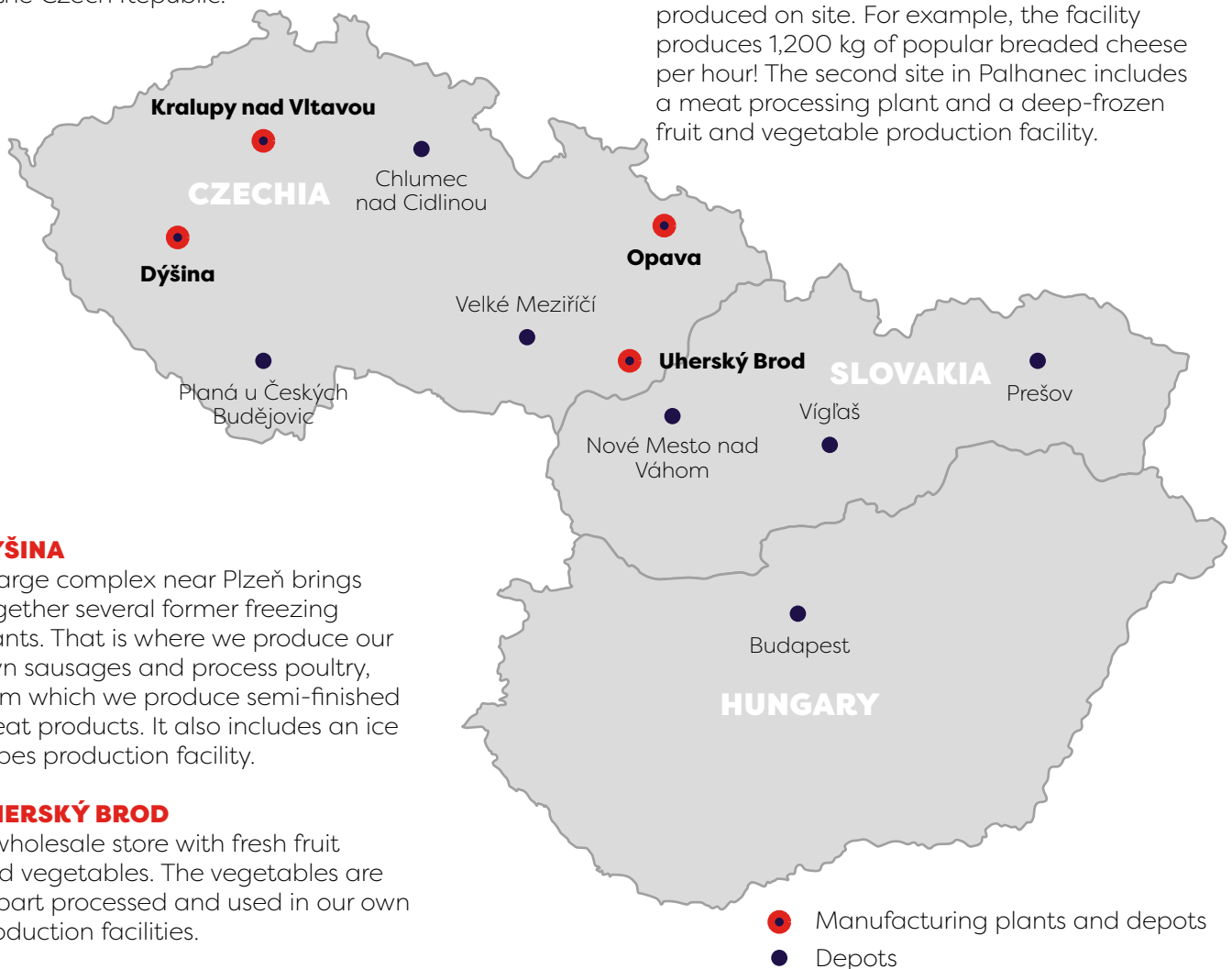
**Several superlatives can be attributed to our company. The most important of them are related to our production facilities. There are five of them, most of which are among the largest and most modern in Central Europe. Adherence to high standards is monitored by internal quality staff and competent government bodies and, on a regular basis, by independent auditors. This has earned us several prestigious international certificates.**

### KRALUPY NAD VLTAVOU

In Kralupy, we opened one of the largest and most modern fresh fish packing plants in Central Europe in 2022. The total cost of the construction and fitting project was CZK 400 million. About 400 tonnes of fresh fish are processed there on a monthly basis. In Kralupy we also operate a deep-frozen fish processing plant, a beef and pork cutting plant, which produces semi-finished meat products, and a venison processing plant, one of the largest in the Czech Republic.

### OPAVA

There are two production sites in Opava. The first is near the historical centre on the premises of the original Slezské mrazírny. It includes an ice cream factory. It has been producing ice cream since the 1960s. Every year, 13 million litres of ice cream and sorbet are produced there. Sous-vide products, potato products, pastry and ready meals are also produced on site. For example, the facility produces 1,200 kg of popular breaded cheese per hour! The second site in Palhanec includes a meat processing plant and a deep-frozen fruit and vegetable production facility.



### DÝŠINA

A large complex near Plzeň brings together several former freezing plants. That is where we produce our own sausages and process poultry, from which we produce semi-finished meat products. It also includes an ice cubes production facility.

### UHERSKÝ BROD

A wholesale store with fresh fruit and vegetables. The vegetables are in part processed and used in our own production facilities.

  
— —  
**BANQUET**  
— —  
PREMIUM SOUS VIDE

  
— —  
**BRAVUR**  
— —  
*Premium*

**NOWACO**

  
— —  
**BAGETIER**  
— —

*La Panna*  
— —  
GELATO  
— —

  
**Prima**



# BANQUET

— PREMIUM SOUS VIDE —





### **What does the sous-vide method mean?**

Sous-Vide (from French “in vacuum”) is a cooking method when the meats are prepared in vacuum packaging immersed in water or steam with controlled temperature below the boiling point. The cooking then takes several hours resulting in preserving the natural taste, juiciness and texture of the meats and limits the losses of important nutrients during cooking with high temperature. For example beef meat is being prepared for more than 10 hours.

### **Where is the sous-vide made?**

Bidfood opened a sous-vide operation in its own factory in Opava in spring 2014. The production plant has obtained all necessary quality certificates and is regularly inspected in compliance with the strictest veterinary and hygiene standards. In the last year, Bidfood produced 3 140 tonnes of sous-vide meat, i.e. 150 trucks. With growing demand, the production facilities were substantially expanded and modernised in 2020. This also enables Bidfood to develop new innovations and products in the Banquet sous-vide range.

### **Who is the sous-vide suitable for?**

Our products are appreciated by all customers from school canteens, kiosks, catering companies to hotels and upper class restaurants. You can devote your energy, skills and time to preparing perfect sauces and side dishes, flavouring and presentation of your food – we deliver juicy and tender meat. Meat purchased from us is already pre-prepared and in the same condition as the chef would get it after many hours of preparation and cooking.

## **WHAT ARE THE ADVANTAGES OF USING SOUS-VIDE FROM BIDFOOD?**

- 1** ..... You buy the meat already cooked, you avoid handling and cleaning raw meat at your place. You won't have to worry about inspections – with our meat you have the assurance of HACCP compliance. You avoid cross-contamination of food.
- 2** ..... You always get the product in the same quality – then you can adapt your working procedures and calculations.
- 3** ..... No further weight losses due to heat during preparation. This has already taken place in the preparation process – i.e. you sell as much meat as you buy (see table of losses in conventional meat processing).
- 4** ..... You save time, energy and human labour – most products are ready to be served within 20–30 minutes – you will appreciate this especially for more complicated products such as stuffed rolls, which typically take hours to prepare in your usual routine.
- 5** ..... The products contain gravy that you can use to prepare sauces.
- 6** ..... You won't be surprised by unexpectedly increased demand – your meat is always ready.

🌡️/❄️ 709401

**CHICKEN ROLL STUFFED (2 PCS)**



1 × ca. 2 kg  
190 °C/15–20 min

🌡️/❄️ 709402

**CHICKEN ROLL WITH SPINACH AND BACON (2 PCS)**



1 × ca. 2,4 kg  
190 °C/15–20 min

🌡️/❄️ 709409

**CHICKEN ROLL WITH DRY TOMATOES (2 PCS)**



1 × ca. 2,2 kg  
190 °C/15–20 min

🌡️/❄️ 709412

**PORK ROLL WITH WILD GARLIC (2 PCS)**



1 × ca. 2 kg  
170 °C/15–20 min

🌡️/❄️

**TURKEY ROULADE (2 PCS)**



1 × ca. 1,3 kg  
80 °C/10 min

🌡️/❄️ 709201

**TURKEY BREAST**



1 × ca. 2,2 kg  
100 °C/8 min

🌡️/❄️ 709259

**HALF CHICKEN**



1 × ca. 1 kg  
230 °C/15 min

🌡️/❄️ 709252

**CHICKEN WINGS**



1 × ca. 1,6 kg  
200 °C/10 min

🌡️/❄️ 709260

**CHICKEN BREAST (6 PCS)**



1 × ca. 1,8 kg  
80 °C/10 min

🌡️/❄️ 709317

**PULLED DUCK LEGS BONELESS (6 PSC)**



1 × ca. 1,5–2,5 kg  
190 °C/10 min

🌡️/❄️ 709305

**DUCK LEGS SMALL (6 PSC)**

1 × ca. 1,5 kg  
190 °C/15–20 min

🌡️/❄️ 709301

**DUCK LEGS MEDIUM (6 PCS)**

1 × ca. 1,8 kg  
190 °C/15–20 min

🌡️/❄️ 709306

**DUCK LEGS LARGE (4 PCS)**

1 × ca. 1,7 kg  
190 °C/15–20 min



🌡️/❄️ 709001

**PORK SHOULDER**

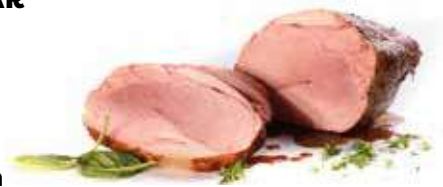
1 × ca. 2,1 kg  
100 °C/15 min



🌡️/❄️ 709002

**PORK COLLAR**

1 × ca. 2,4 kg  
100 °C/15 min



sous-vide

🌬️/❄️ 709309

**DUCK BREAST (6 PCS)**



1 × ca. 1,6 kg  
210 °C/10 min

🌬️/❄️ 709021

**PORK TENDERLOIN (2 PCS)**



1 × ca. 1,2 kg  
fry in the pan until golden brown

🌬️/❄️ 709020

**PULLED PORK**



1 × ca. 1,1 kg  
80 °C/15 min

🌬️/❄️ 709008

**PORK SHANK**



1 × ca. 0,9 kg  
200 °C/20–30 min

🌬️/❄️ 709010

**PORK SHANK BONELESS**



1 × ca. 1,1 kg  
200 °C/20–30 min

🌬️/❄️ 709029

**PORK BELLY**



1 × ca. 2,2 kg  
200–220 °C/30 min

🌬️/❄️ 709006

**PORK LOIN RIBS (2 PCS)**



1 × ca. 1,3 kg  
200 °C/12–15 min

🌬️/❄️ 709026

**PORK LOIN RIBS WITH BBQ HONEY MARINADE (2 PCS)**



1 × ca. 1,6 kg  
200 °C/12–15 min

🌬️/❄️ 709053

**PULLED BEEF**



1 × ca. 1,1 kg  
80 °C/15 min

❄️

**BEEF BRISKET**



1 × 0,6 - 1 kg  
220 °C/7 min

🌬️/❄️ 709051

**BEEF CHUCK TENDER**



1 × ca. 2 kg  
100 °C/15 min

🌬️/❄️ 709058

**BEEF GOULASH**



1 × 3 kg  
80 °C/20 min

🌬️/❄️ 709054

**BEEF CHEEKS**



1 × ca. 2,6 kg  
80 °C/20 min

🌬️/❄️ 709057

**BEEF RIBS (2 PCS)**



1 × ca. 2 kg  
120 °C/20 min

🌿/❄️ 709105  
**GAME GOULASH**



1 × 3 kg  
80 °C/30 min

🌿/❄️ 709351  
**GOOSE LEGS  
(4 PCS)**



1 × ca. 1,9 kg  
190 °C/15–20 min

❄️ 208059  
**FLANK STEAK**



1 × ca. 0,5 kg  
fry on pan 1,5–2 min

🌿/❄️ 709101  
**DEER LEG**



1 × ca. 2,1 kg  
100 °C/15 min

🌿/❄️ 709502  
**RABBIT LEGS (6 PCS)**



1 × ca. 1,5 kg  
180 °C/15–20 min

🌿/❄️ 709602  
**LAMB SHANK**



1 × ca. 0,5 kg  
80 °C/15 min





**NOWACO**

## GASTRO

☼ 342045  
**BREADED  
CHEESE 125 g**



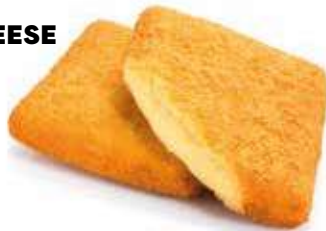
1 × 3,5 kg

☼ 342030  
**BREADED CHEESE  
TRIANGLE 60 g  
(FOR OVEN)**



1 × 3,5 kg

☼ 310501  
**VEGAN BREADED CHEESE  
ALTERNATIVE 100 g**



1 × 3,5 kg

☼ 342053  
**PORK SCHNITZEL  
200 g**



1 × 6 kg

☼ 342380  
**CHICKEN SCHNITZEL  
30-60 g**



1 × 3 kg

☼ 342202  
**POTATO  
DUMPLINGS  
WITH SMOKED  
PORK 40 g**



1 × 5 kg

☼ 342201  
**POTATO  
DUMPLINGS  
WITH SMOKED  
HAM 40 g**



1 × 5 kg

## ready meals

☼ 342043  
**BREADED  
CHEESE 80 g**



1 × 3,5 kg

☼ 342038  
**BREADED GOUDA  
CHEESE 125 g**



1 × 3,5 kg

☼ 342051  
**PORK SCHNITZEL  
CA. 150 g**



1 × 4,5 kg

☼ 230150  
**CHICKEN  
SCHNITZEL  
120 g**



1 × 3 kg

☼ 342160  
**BREADED  
CAULIFLOWER**



1 × 3 kg

☼ 342221  
**POTATO  
DUMPLINGS  
WITH SMOKED  
PORK 70 g**



1 × 5 kg

❄️ 340052  
**STRAWBERRY CURD  
CHEESE DUMPLINGS**  
50 g



1 × 5 kg

❄️ 340053  
**APRICOT CURD CHEESE  
DUMPLINGS 50 g**



1 × 5 kg

❄️ 340130  
**POCKETS FILLED  
WITH PLUM JAM**



1 × 5 kg

❄️ 340054  
**BLUEBERRY CURD  
CHEESE DUMPLINGS**  
50 g



1 × 5 kg

❄️ 340120  
**CURD CHEESE  
POCKETS**



1 × 5 kg

❄️ 340078  
**POTATO DUMPLINGS  
STUFFED WITH  
POPPY SEEDS 30 g**



1 × 5 kg

RETAIL

❄️ 333296  
**BREADED CHEESE**



10 × (2 × 100 g)

❄️ 333288  
**BREADED GOUDA**



10 × (2 × 100 g)

❄️ 310401  
**VEGAN BREADED  
CHEESE  
ALTERNATIVE**



10 × (2 × 100 g)

❄️ 230163  
**ZIZU CHICKEN  
STRIPS**



3 × 1 kg

❄️ 333314  
**BREADED CHEESE  
FOR OVEN**



10 × (2 × 100 g)

❄️ 333289  
**BREADED CHEESE**



10 × (4 × 100 g)

❄️ 230008  
**CHICKEN SCHNITZEL**



15 × 500 g

❄️ 230189  
**CHICKEN STRIPS  
ZIZU PREMIUM**



5 × 1 kg

## RETAIL

ready meals

❄ 230010

### SPICY CHICKEN STRIPS



10 × 400 g

❄ 230011

### CHICKEN STRIPS



16 × 500 g

❄ 230012

### CORNFLAKES CHICKEN STRIPS



20 × 500 g

❄ 230014

### CORDON BLEU



12 × 400 g

❄ 230031

### CHICKEN WINGS BREADED SPICY



12 × 500 g

❄ 230032

### CHICKEN WINGS BREADED



12 × 500 g

❄ 333201

### BREADED CAULIFLOWER



15 × 400 g

❄ 330157

### STRAWBERRY CURD CHEESE DUMPLINGS



10 × 320 g

❄ 330184

### BLUEBERRY CURD CHEESE DUMPLINGS



10 × 320 g

❄ 330322

### CURD CHEESE POCKETS



12 × 350 g

❄ 330553

### POTATO DUMPLINGS STUFFED WITH POPPY SEEDS



16 × 480 g

❄ 333042

### POTATO DUMPLINGS STUFFED WITH SMOKED MEAT



10 × 320 g

❄ 316391

### STUFFED PIEROGI WITH PORK MEAT



12 × 390 g

❄ 316392

### STUFFED PIEROGI WITH CHICKEN MEAT



12 × 390 g

❄ frozen ❄ cold ☀ dry 🚫 gluten free



# GREAT FISH MEAT FROZEN RIGHT AT THE SEA

- » ON-BOARD FISH PROCESSING
- » WITHOUT ADDED WATER AND ADDITIVES
- » 100% FISH MEAT
- » LOCATION OF CATCH: ALASKA, USA



# NOWACO<sup>®</sup>



american seafood

139005  
**ALASKA POLLOCK/  
PACIFIC HAKE PORTIONS  
(150 g)**

*frozen*  
1 × 7,5 kg

139016  
**ALASKA POLLOCK/  
PACIFIC HAKE PORTIONS  
(100 g)**

*frozen*  
1 × 5 kg

139035  
**ALASKA POLLOCK/  
PACIFIC HAKE PORTIONS  
EXCLUSIVE (100 g)**

*frozen*  
1 × 5 kg

139022  
**ALASKA POLLOCK/  
PACIFIC HAKE PORTIONS  
(120 g)**

*frozen*  
1 × 4,8 kg



❄️ 166991

**ALASKA POLLOCK  
STRIPS MSC  
15-35 G**

1 × 4 kg

❄️ 166964

**FISH & CHIPS  
ALASKA POLLOCK  
PORTIONS MSC  
142 G**

1 × 5 kg

❄️ 166969

**WHOLEGRAIN BREADED  
ALASKA POLLOCK  
PORTIONS MSC  
113 G**

1 × 5 kg

❄️ 138086

**BREADED  
ALASKA POLLOCK  
FILLETS PREMIUM  
150 G**

1 × 6 kg

❄️ 138022

**FISH FINGERS  
PREMIUM 30 G**

1 × 6 kg

❄️ 110045

**ALASKA POLLOCK/  
PACIFIC HAKE  
PORTIONS**

22 × 200 g

❄️ 110080

**ALASKA POLLOCK/  
PACIFIC HAKE  
PORTIONS MSC**

35 × 400 g

❄️ 110063

**ALASKA POLLOCK/  
PACIFIC HAKE  
PORTIONS MSC**

30 × 300 g

❄️ 110051

**ALASKA POLLOCK/  
PACIFIC HAKE  
PORTIONS WITH  
HERB BUTTER MSC**

12 × 210 g

❄️ 131030

**SALMON FISH  
FINGERS MINCED  
NOWACO**

10 × 250 g

❄️ 131010

**FISH FINGERS  
MINCED**

10 × 250 g

❄️ 131025

**FISH FINGERS  
MINCED**

10 × 450 g

❄️ 131035

**FISH FINGERS  
PREMIUM MSC**

10 × 250 g

## RETAIL

## RETAIL


fish

✿ 131041  
**FISH FINGERS  
PREMIUM MSC**

10 × 450 g



✿ 131007  
**GLUTENFREE  
FISH FINGERS  
PREMIUM MSC**

  
10 × 250 g



✿ 132011  
**BREADED  
ALASKA POLLOCK  
PORTIONS  
PREMIUM MSC**

10 × 200 g



✿ 132051  
**FISH & CHIPS  
MSC**

12 × 350 g



✿ 132050  
**WHOLEGRAIN BREADED  
ALASKA POLLOCK  
PORTIONS  
PREMIUM MSC**

10 × 226 g



✿ 132037  
**ALASKA POLLOCK  
NUGGETS  
PREMIUM MSC**

6 × 360 g



✿ 132039  
**SALMON NUGGETS**

15 × 250 g





## The Art of Smoking: Bravur Charcuterie

Exceptional taste, premium ingredients, and top-quality craftsmanship these are the reasons why Bravur charcuterie from Bidfood is gaining popularity on the market. By combining cutting-edge technology, high-quality meats, and premium Austrian spices, we create products that stand out. But the heart of our craft lies in the skill of our master smokers, each with over two decades of experience. Their dedication, paired with the time-honoured tradition of beech wood smoking, results in authentic flavours you can trust.

### What Makes Smoked Meat Special?

Smoking isn't just a preservation method - it's an art that enhances flavour, aroma, and texture. Using beech wood, we create a distinctive, rich taste that has been cherished for over 80,000 years. Unlike raw meat, smoked products are ready to enjoy while meeting the strictest HACCP hygiene standards.

... if Czechs were to invent a national sport, it just might be smoking meat! That's why we expertly smoke a variety of meats our customers love: pork collar, pork leg, chicken thigh, chicken breast, and bacon - all naturally smoked with pure beech wood, free from substitutes and allergens.

Discover **Bravur** - where tradition meets excellence in every bite.

## GASTRO

☑/❄ 724407

### BAVARIAN GRILL SAUSAGE

🐷 95 %



10 × 180 g



☑ 724410

### VIENNA MINI SAUSAGES

🐷 73 %

🐮 10 %



40 × ca. 25 g



☑ 724411

### CHICKEN MINI SAUSAGES

🐔 64 %



40 × ca. 25 g



☑ 724412

### DELICATE MINI SAUSAGES

🐷 50 %

🐮 20 %



40 × ca. 25 g



☑ 724422

### GRILL SAUSAGE

🐷 81 %

🐮 16 %



10 × ca. 150 g

☑/❄ 724408

### SPICY GRILL SAUSAGE

🐷 81 %

🐮 16 %



10 × ca. 180 g

## hams, sausages & bacon

☑ 724424

### BOCKWURST SAUSAGE

🐷 54 %

🐮 21 %



10 × ca. 180 g



☑ 724403

### VIENNA SAUSAGES

🐷 73 %

🐮 10 %



20 × 50 g



☑ 724404

### CHICKEN SAUSAGES

🐔 64 %



20 × ca. 50 g



☑ 724402

### DELICATE SAUSAGES

🐷 50 %

🐮 20 %



40 × ca. 50 g



☑ 724413

### MINI SAUSAGE BREAKFAST MIX



30 × ca. 50 g



☑/❄ 724405

### FARMER'S SAUSAGE

🐷 61 %

🐮 9 %



10 × ca. 100 g



☑/❄ 724401

### HAM SAUSAGE

🐷 61 %

🐮 9 %



10 × ca. 150 g



☑ 723138

### ORAVA BACON



1 × ca. 1,3 kg



724414

**PRESSED ENGLISH BACON**



1 x 1 kg

725063

**PRESSED ENGLISH BACON SLICED**



1 x 1 kg

723135

**ENGLISH BACON**



1 x ca. 1,3 kg

723140

**ENGLISH BACON PREMIUM**



1 x ca. 1,3 kg

724107

**WILD BOAR PROSCIUTTO**



1 x ca. 500 g



724102

**PORK LOIN PROSCIUTTO**



1 x ca. 320 g



724129

**GUANCIALE**



1 x ca. 1 kg



724118

**PORK LOIN PROSCIUTTO**



1 x ca. 800 g



724115

**PROSCIUTTO COPPA**



1 x ca. 750 g



724106

**BRESAOLA ENTERCOTE**



1 x ca. 700 g



724120

**MONASTERY PROSCIUTTO**



1 x ca. 2,3 kg



724123

**PANCETTA SLICED**



1 x ca. 400 g



724103

**PANCETTA PROSCIUTTO**



1 x ca. 1,5 kg



724101

**DUCK BREAST PROSCIUTTO**



1 x ca. 350 g



## GASTRO

724137

### BACON PROSCIUTTO



1 × ca. 1,5 kg



723164

### CHICKEN HAM STANDARD



62 %



1 × ca. 2,2 kg



726061

### TURKEY HAM PRIME



94 %



1 × 3 kg



726056

### PORK HAM STANDARD RECTANGLE-SHAPED



55 %



1 × 3 kg



726057

### PORK HAM SELECTED RECTANGLE-SHAPED



77 %



1 × 3 kg



hams, sausages & bacon

726060

### CHICKEN HAM PRIME



94 %



1 × 3 kg



726063

### PORK HAM STANDARD



55 %



1 × 3 kg



726069

### PORK HAM SELECTED



77 %



1 × 3 kg



726062

### PORK HAM PRIME



94 %



1 × 3 kg



# hams, sausages & bacon

RETAIL

725303

## BAVARIAN MINI SAUSAGE

95 %



6 x 200 g



725311

## VIENNA SAUSAGE WITH CHEESE

65 %  
 9 %



6 x 200 g



725304

## VIENNA MINI SAUSAGE

73 %  
 10 %



6 x 200 g



725308

## SLICED BACON



6 x 100 g



725301

## PRESSED BACON BLOCK



10 x 200 g



725310

## PORK HAM PRIME RECTANGLE SHAPED SLICES

94 %



6 x 100 g



725307

## CHICKEN HAM SLICES

94 %



6 x 100 g



724203

## PORKLOIN PROSCIUTTO SLICED

94 %



10 x 100 g



724204

## LITOMERICE PROSCIUTTO SLICED

92 %



10 x 100 g



724207

## MONASTERY PROSCIUTTO SLICED

92 %



10 x 100 g



# BAGETIER



pastry

GASTRO

❄️ 335601

**PUFF PASTRY WITH COTTAGE CHEESE AND APRICOTS**



40 x 150 g

❄️ 335602

**PUFF PASTRY WITH CUSTARD AND RASPBERRIES**



40 x 150 g

❄️ 335611

**PUFF PASTRY WITH APPLES**



40 x 150 g

❄️ 335858

**MINI PASTRY WITH CUSTARD AND STRAWBERRIES**



125 x 40 g

❄️ 335861

**MINI PASTRY WITH CUSTARD AND BLUEBERRIES**



125 x 40 g

❄️ 335859

**MINI PASTRY WITH CUSTARD AND CHOCOLATE**



125 x 40 g

❄️ 336017

**SHEETS OF PUFF PASTRY**



15 x 700 g

❄️ 336025

**PUFF PASTRY NOWACO RETAIL 3 BLOCKS**



36 x 400 g

❄️ frozen ❄️ cold ☀️ dry 🚫 gluten free



# LA PANNA GELATO

2025



ORIGINAL ITALIAN RECIPE



# SORBETTO



## FRUIT LINE SORBETTO

TRUE ITALIAN SORBETTO DOES NOT CONTAIN ANY FATS, JUST FRUIT, WATER AND SUGAR.

SORBET LA PANNA ALWAYS CONTAINS AT LEAST 15% OF FRUIT CONTENT AND SOME OF THE FLAVOURS HOLD UP TO 50% OF IT. AS A RESULT OF THIS LA PANNA SORBETS WILL ALWAYS INTRIGUE YOU WITH ITS LIGHTNESS, REFRESHING TEXTURE, NATURAL FLAVOUR OF REAL RIPE FRUIT AND ITS AUTHENTIC FRUIT COLOUR. OUR SORBETS DO NOT CONTAIN ANY CHEMICAL COLORANTS, NEITHER ANY UNNECESSARY CHEMICAL SUBSTITUTES OR ADDITIVES, JUST A TRUE TASTE OF FRUIT. THIS MAKES OUR SORBETS SUITABLE FOR VEGAN DIET.

✿ 520460

**STRAWBERRY SORBET**



✿ 520471

**RASPBERRY SORBET**



✿ 520461

**MANGO SORBET**



✿ 520473

**TANGERINE SORBET**



✿ 520463

**LEMON SORBET**



✿ 520476

**BLACK CURRANT SORBET**



# CLASSICO



❄ 520431  
**VANILLA  
ICE CREAM**



❄ 520432  
**CHOCOLATE  
ICE CREAM**



❄ 520433  
**STRAWBERRY  
ICE CREAM**



❄ 520434  
**STRACCIATELLA  
ICE CREAM**



❄ 520435  
**WALNUT  
ICE CREAM**



❄ 520442  
**SMURF  
ICE CREAM**



❄ 520438  
**SALTED CARAMEL  
ICE CREAM**



❄ 520437  
**TUTTI FRUTTI  
ICE CREAM**



❄ 520443  
**COCONUT&CHOCOLATE  
ICE CREAM**



❄ 520436  
**YOGURT&RASPBERRY  
ICE CREAM**



# COLLEZIONE



## EXCLUSIVE LINE COLLEZIONE

OUR LINE COLLEZIONE OFFERS UNIQUE ICE CREAM FLAVOURS, THAT ARE BASED ON HARMONIC COMBINATION OF INDIVIDUAL INGREDIENTS OR ON MAXIMUM TASTE EXPERIENCE OF TRADITIONAL FLAVOURS SUCH AS REAL PISTACCHIO. THIS ONE IS MADE OF TRUE PISTACCHIO PASTE JUST AS ALL OF OUR OTHER NUT ICE CREAM FLAVOURS THAT CONTAIN REAL NUT PASTES FOR AUTHENTIC TASTE.

❁ 520464

**REAL PISTACCHIO  
ICE CREAM**



❁ 520466

**PECAN HONEY ICE  
CREAM**



❁ 520465

**MINT&CHOCOLATE  
ICE CREAM**



❁ 520475

**BELGIUM CHOCOLATE  
ICE CREAM**



❁ 520472

**BOURBON VANILLA  
ICE CREAM**



❄️ 520705  
**VANILLA  
ICE CREAM**



❄️ 520760  
**VANILLA  
ICE CREAM**



1 × 5 l

2 × 2,3 l

❄️ 520706  
**CHOCOLATE  
ICE CREAM**



❄️ 520761  
**CHOCOLATE  
ICE CREAM**



1 × 5 l

2 × 2,3 l

❄️ 520707  
**STRAWBERRY  
ICE CREAM**



❄️ 520763  
**PISTACCHIO  
ICE CREAM**



1 × 5 l

2 × 2,3 l

❄️ 500010  
**STRAWBERRY&CURD CHEESE  
ICE CREAM STICK  
CHOCOLATE COATING**



❄️ 500020  
**STRAWBERRY&CURD CHEESE  
ICE CREAM STICK  
WHITE CHOCOLATE  
COATING**



48 × 45 ml

48 × 45 ml

❄️ 500073  
**STRAWBERRY SORBET  
STICK CHOCOLATE  
COATING**



❄️ 500083  
**RASPBERRY SORBET  
STICK CHOCOLATE  
COATING**



48 × 50 ml

48 × 50 ml

❄️ 500050  
**MANGO SORBET STICK  
WHITE CHOCOLATE  
COATING**



❄️ 523090  
**STRAWBERRY  
SORBET CUP**



48 × 50 ml

24 × 90 ml

❄️ 523084  
**MANGO SORBET  
CUP**



24 × 90 ml

RETAIL

## RETAIL

ice cream

❄️ 502359

**PEGAS PREMIUM  
ALMOND**



25 x 100 ml

❄️ 502364

**PEGAS PREMIUM  
CLASSIC**



25 x 100 ml

❄️ 502356

**PEGAS PREMIUM  
WHITE**



25 x 100 ml

❄️ 502365

**PEGAS PREMIUM  
HAZELNUT**



25 x 100 ml

❄️ 527027

**VANILLA PEGAS  
PREMIUM CONE**



24 x 115 ml

❄️ 527028

**CHOCOLATE PEGAS  
PREMIUM CONE**



24 x 115 ml

❄️ 502285

**PIKAO ICE CREAM STICK**



48 x 50 ml

❄️ 502284

**PIKNIK ICE CREAM STICK**



48 x 50 ml

❄️ 500224

**WATER-BASED PUSH UP  
ICE LOLLY CHERRY COLA**



24 x 115 ml

❄️ 500225

**WATER-BASED PUSH UP  
ICE LOLLY STARWBERRY**



24 x 115 ml

❄️ 500223

**WATER-BASED PUSH UP  
ICE LOLLY ORANGE**



24 x 115 ml

❄️ 500440

**BUBBLE GUM & RASPBERRY  
POPPING CANDY ICE CREAM.**



25 x 70 ml

❄️ 523229

**STRAWBERRY&MANGO  
SORBET**



9 x 900 ml

❄️ 523212

**VANILLA ICE CREAM  
WITH CHOCOLATE  
TOPPING**



9 x 900 ml

❄️ 523206

**STRAWBERRY  
ICE CREAM WITH  
STRAWBERRY  
TOPPING**



9 x 900 ml

❄️ 523211

**CREAMY ICE CREAM  
WITH RASPBERRY  
TOPPING**



9 x 900 ml

❄️ 523218

**PISTACCHIO  
ICE CREAM  
WITH CHOCOLATE  
TOPPING**



9 x 900 ml

❄️ 523008

**TRADITIONAL CZECH ICE  
CREAM CHOCOLATE**



12 x 350 ml

❄️ 525031

**PIANISSIMO  
CHOCOLATE**



8 x 650 ml

❄️ 523230

**STRAWBERRY  
SORBET**



9 x 900 ml

❄️ 523207

**CHOCOLATE ICE CREAM  
WITH CHOCOLATE  
TOPPING**



9 x 900 ml

❄️ 523209

**STRACCIATELLA  
ICE CREAM WITH  
BLACK CHERRY  
TOPPING**



9 x 900 ml

❄️ 523216

**LEMON ICE CREAM  
WITH LIME  
TOPPING**



9 x 900 ml

❄️ 523006

**TRADITIONAL  
CZECH ICE CREAM  
VANILLA**



12 x 350 ml

❄️ 525032

**PIANISSIMO  
VANILLA**



8 x 650 ml

## RETAIL

❄️ 502371

### PEGAS ALMOND MULTIPACK



10 × (3 × 100 ml)

❄️ 500031

### MULTIPACK STRAWBERRY & CURD CHEESE ICE CREAM STICK CHOCOLATE COATING



10 × (6 × 45 ml)

❄️ 500034

### MULTIPACK STRAWBERRY SORBET



10 × (6 × 50 ml)

❄️ 500231

### MULTIPACK WATER-BASED PUSH UP ICE LOLLY STRAWBERRY



10 × (4 × 115 ml)

❄️ 523403

### MANGO SORBET CUP



8 × 460 ml

❄️ 523420

### PEGAS PREMIUM ALMOND CUP



8 × 460 ml

❄️ 523419

### PEGAS PREMIUM PISTACHIO CUP



8 × 460 ml

## ice cream

❄️ 527154

### PEGAS VANILLA PREMIUM CONE MULTIPACK



10 × (4 × 115 ml)

❄️ 500048

### MULTIPACK STRAWBERRY & CURD CHEESE ICE CREAM STICK CHOCOLATE AND WHITE CHOCOLATE COATING



10 × (6 × 45 ml)

❄️ 500033

### MULTIPACK STRAWBERRY & RASPBERRY MIX SORBET



10 × (6 × 50 ml)

❄️ 523401

### STRAWBERRY SORBET CUP



8 × 460 ml

❄️ 523042

### RASPBERRY SORBET CUP



8 × 460 ml

❄️ 523421

### PEGAS PREMIUM HAZELNUT CUP



8 × 460 ml

NOWACO<sup>®</sup>



## GASTRO

## vegetables

❄️ 418045

### LEAF SPINACH PORTIONS



1 × 2,5 kg

❄️ 414008

### SPINACH PUREE



4 × 2,5 kg

❄️ 414116

### BROCCOLI FLORETS



4 × 2,5 kg

❄️ 414200

### GREEN BEANS CUT



4 × 2,5 kg

❄️ 414060

### CORN



4 × 2,5 kg

❄️ 418036

### CORN COBS CUTTED



1 × 2,5 kg

❄️ 414170

### CARROT CUBES



4 × 2,5 kg

❄️ 414015

### SPINACH CHOPPED PORTIONS



4 × 2,5 kg

❄️ 414040

### GREEN PEAS



4 × 2,5 kg

❄️ 418025

### WHOLE GREEN BEANS



1 × 2,5 kg

❄️ 414130

### SAVOY CABBAGE CHOPPED



4 × 2,5 kg

❄️ 414068

### CORN COBS



1 × 10 kg

❄️ 418005

### BABY CARROTS



1 × 2,5 kg

❄️ 414161

### PEPPER MIX STRIPES



1 × 2,5 kg

❄️ 414190

**WHITE ONION CUBES**



4 x 2,5 kg

❄️ 414096

**CAULIFLOWER FLORETS**



4 x 2,5 kg

❄️ 418020

**LEEK SLICES**



1 x 2,5 kg

❄️ 414153

**PEPPER PODS SEEDLESS**



1 x 8 kg

❄️ 418010

**CHAMPIGNONS SLICES**



1 x 2,5 kg

❄️ 426092

**GARLIC BLOCK PORTIONS**



1 x 1 kg

❄️ 426091

**GARLIC BLOCK**



1 x 1 kg

❄️ 418051

**RED KIDNEY BEANS**



1 x 2,5 kg

❄️ 418205

**CREAM SAUCE VEGETABLE MIX - STRIPES**

(carrots, celery, parsnips, parsley)



1 x 2,5 kg

❄️ 416050

**CREAM SAUCE VEGETABLE MIX - CUBES**

(carrots, celery, parsnips, parsley)



4 x 2,5 kg

❄️ 416230

**CHINESE VEGETABLE MIX**

(cabbage, carrots, yellow and red peppers, mushrooms, black Chinese mushrooms)



4 x 2,5 kg

❄️ 416060

**CHÂTEAU MIX**

(orange and yellow carrots, pea pods, chopped mini corn and broccoli)



4 x 2,5 kg

❄️ 416270

**VEGETABLE MIX**

(tomato, pepper, onion)



4 x 2,5 kg

❄️ 418210

**VEGETABLE MIX BALL TRIO**

(parisian carrots, sweet peas, corn)



1 x 2,5 kg

## GASTRO

vegetables

❄️ 416071

### SOUP VEGETABLE MIX

#### TINY CUBES

(carrots, parsnips, celery, spring onions, chives)



4 × 2,5 kg

❄️ 416083

### SOUP MIX JULIENNE

(carrots, parsnips, celery, spring onions, parsley, chives)



4 × 2,5 kg

❄️ 416305

### SPRING VEGETABLE MIX

(carrots, peas, cauliflower, green bean)



4 × 2,5 kg

❄️ 426030

### CHIVE



8 × 250 g

❄️ 426010

### PARSLEY



8 × 250 g

❄️ 426090

### DILL



8 × 250 g

❄️ 426070

### BASIL



8 × 250 g

## RETAIL

❄️ 410119

### SPINACH PUREE



10 × 450 g

❄️ 420022

### CHOPPED SPINACH WITH CREAM AND GARLIC



15 × 400 g

❄️ 410125

### SPINACH PUREE FOIL



24 × 450 g

❄️ 410130

### LEAF SPINACH PORTIONS



15 × 400 g

❄️ 410135

### CHOPPED SPINACH PORTIONS



15 × 400 g

❄️ 410207

### GREEN PEAS



15 × 350 g

❄️ frozen ❄️ cold ☀️ dry 🚫 gluten free

❄️ 410236  
**SWEET CORN**



15 x 350 g

❄️ 410261  
**CUT GREEN BEANS**



15 x 350 g

❄️ 410321  
**BROCCOLI FLORETS**



15 x 350 g

❄️ 410360  
**CHAMPIGNONS SLICES**



15 x 350 g

❄️ 410396  
**BRUSSELS SPROUTS**



15 x 350 g

❄️ 410386  
**SAVOY CABBAGE CHOPPED**



15 x 400 g

❄️ 410101  
**BABY CARROT**



15 x 350 g

❄️ 412281  
**MEXICAN MIX**  
(carrots, corn, bean pods, red beans, green, red and yellow peppers, onion)



15 x 350 g

❄️ 412167  
**CREAM SAUCE VEGETABLES MIX**  
(carrots, celery, parsnips, parsley)



15 x 350 g

❄️ 412166  
**CREAM SAUCE VEGETABLES MIX - CUBES**  
(carrots, celery, parsnips, parsley)



15 x 350 g

❄️ 412436  
**SOUP VEGETABLES MIX**  
(carrots, parsnips, cauliflower, beans, kohlrabi, leeks, celery)



15 x 350 g

❄️ 412438  
**SOUP MIX JULIENNE**  
(carrots, parsnips, celery, spring onions, parsley and chives)



15 x 350 g

❄️ 412430  
**SOUP VEGETABLES MIX SMALL CUBES**  
(carrots, parsnips, celery, spring onions, parsley)



15 x 350 g

❄️ 412126  
**SPRING VEGETABLES MIX**  
(carrots, peas, cauliflower, beans)



15 x 350 g

## RETAIL

vegetables

❄️ 412526

### CHINESE VEGETABLES MIX

(cabbage, carrots, peppers, mushrooms, leeks, onions, pea pods, black Chinese mushrooms)

15 x 350 g



❄️ 412356

### WOK VEGETABLES MIX

(orange carrots, yellow carrots, broccoli, water chestnuts, mini corn, bamboo shoots, pea pods, Chinese black mushrooms, onions.)

15 x 350 g



❄️ 412332

### VEGETABLES MIX ASIA

(broccoli, carrots, peppers, pea pods, onions)

15 x 350 g



❄️ 412132

### SIDE DISH VEGETABLES MIX

(broccoli, carrots, peppers, pea pods, onions)

15 x 350 g



❄️ 412086

### VEGETABLES MIX WITH CORN

(carrots, corn, beans)

15 x 350 g



❄️ 412294

### BRETAGNE VEGETABLES MIX

(fluted carrots slices, cauliflower florets, broccoli florets)

15 x 350 g



❄️ 412066

### PEAS WITH CARROT

(carrots, beans)

15 x 350 g



❄️ 412422

### ROYAL VEGETABLES MIX

(mini carrots, cauliflower, green beans, peas, corn)

15 x 350 g



❄️ 412423

### CHÂTEAU VEGETABLES MIX

(mini carrots, pea pods, broccoli, orange and yellow carrots)

15 x 350 g



❄️ 412446

### DELICATE VEGETABLES MIX

(carrots, peas, beans, cauliflower, corn)

15 x 350 g



❄️ 412606

### VEGETABLES MIX WITH BROCCOLI

(broccoli, carrots, peas, corn, cauliflower)

15 x 350 g



❄️ 412566

### VENECIAN VEGETABLES MIX

(carrots, peas, corn, peppers)

15 x 350 g



❄️ 410371

### MUSHROOM MIX

(oyster mushrooms, mushrooms, Shii-ta-ke, Pholiota nameko, Suillus)

15 x 300 g



❄️ frozen ❄️ cold ☀️ dry 🚫 gluten free

❄ 405030  
**RASPBERRIES**



1 × 2,5 kg

❄ 405040  
**FORREST  
BLUEBERRIES**



1 × 2,5 kg

❄ 405012  
**STRAWBERRIES**



1 × 2,5 kg

❄ 421610  
**FORREST  
FRUIT MIX**



1 × 2,5 kg

❄ 405020  
**SOUR CHERRIES  
STONELESS**



1 × 2,5 kg

❄ 405071  
**APRICOT HALVES**



1 × 2,5 kg

❄ 405031  
**RASPBERRY  
CRUMBLE**



1 × 2,5 kg

❄ 405041  
**CULTIVATED  
BLUEBERRIES**



1 × 2,5 kg

❄ 405013  
**STRAWBERRIES  
SENGA SENGANA**



1 × 2,5 kg

❄ 405042  
**CRANBERRIES**



1 × 2,5 kg

❄ 405048  
**MANGO CUBES**



1 × 2,5 kg

❄ 405015  
**PLUM HALVES**



1 × 2,5 kg

**RETAIL**

❄️ 400011  
**STRAWBERRIES**



15 x 350 g

❄️ 400101  
**RASPBERRIES**



15 x 200 g

❄️ 400103  
**BLUEBERRIES**



15 x 200 g

❄️ 400105  
**FOREST MIX**



15 x 200 g

❄️ 400106  
**MANGO PREMIUM**



15 x 200 g



❄️ 539997  
**ICE CUBES**



6 × 2 kg

❄️ 539995  
**CRUSHED ICE**



6 × 2 kg

❄️ 539983  
**CRUSHED ICE**



1 × 3 kg

❄️ 539984  
**CRUSHED ICE**



1 × 5 kg

❄️ 539981  
**ICE CUBES**



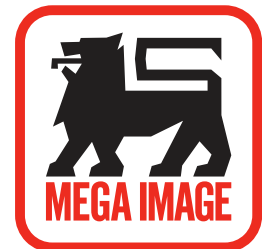
1 × 3 kg

❄️ 539982  
**ICE CUBES**



1 × 5 kg

# OUR PARTNERS



TRANS GOURMET





Contact:



[export@bidfood.cz](mailto:export@bidfood.cz)